



The banner features a dark blue background with a subtle map of Hawaii. In the top left corner, the number '6947' is visible. In the top center, there is a circular seal of the Hawaii Reapportionment Commission. The main text 'Hawaii Reapportionment Commission - Redistricting Online' is displayed in a large, white, sans-serif font.

Hawaii Redistricting Online assists the Hawaii Reapportionment Commission, Advisory Councils, advocacy groups, and the public to create state legislative and congressional redistricting plans following the 2020 U.S. Census.

There is a 25 minute video that describes the steps to create an account and create plans using Hawaii Redistricting Online. If you haven't watched it, here's the link:

[Introduction to Hawaii Redistricting Online \(YouTube video\)](#)

This Click List summarizes the steps shown in the video for creating a new user account.

Click List 1 - New User

Open the Hawaii Redistricting Online app in your browser

<https://redistricting.hawaii.esriemcs.com/redistricting/index.html>

Click "Create a new account"



Enter your name and email and a username and password, then click "Create"

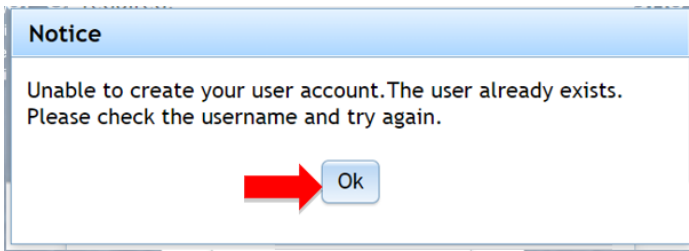


The screenshot shows the 'Create Account' form with the following fields and values:

First name:	Pat
Last name:	Public
Email address:	patpublic@mymail.com
Username:	PatPublic
Password:
Confirm Password:

At the bottom, there are two buttons: 'Create' and 'Cancel'. A red arrow points to the 'Create' button.

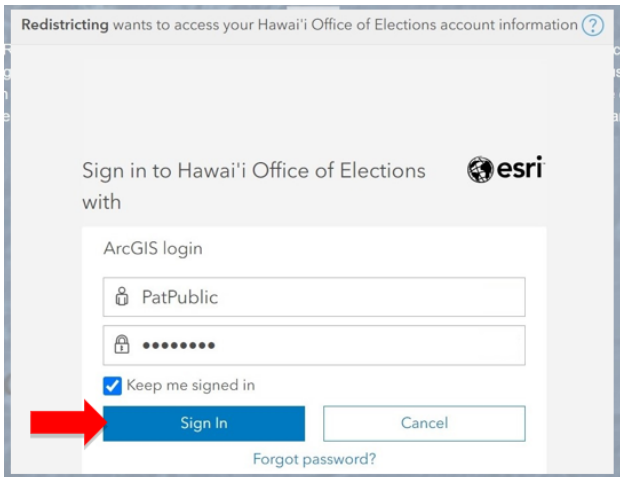
If someone is already using the username you entered, click “OK” and try a different username



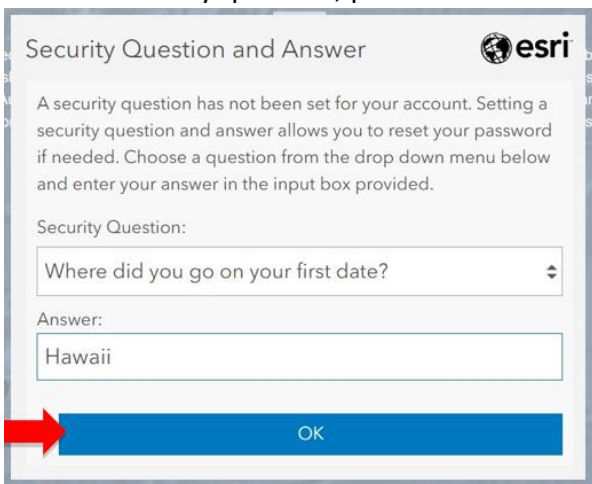
If successful, click “OK”



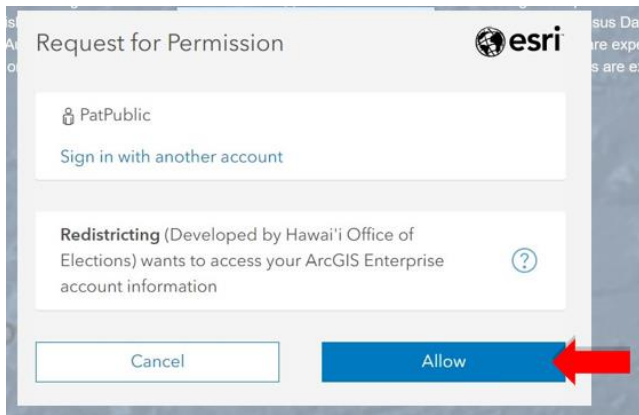
Enter your username and password and click “Sign In”



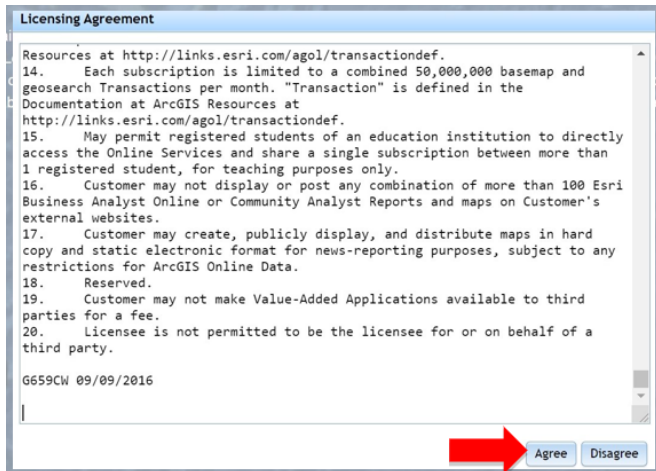
Select a security question, provide the answer, then click “OK”



Click "Allow"



Click "Agree"



Click on a template plan (it turns gray) and then click "OK" to open that plan and start redistricting!

