

Preview Ballot

STATE OF HAWAII - PRIMARY ELECTION
August 10, 2024

38-01

Start Voting Here

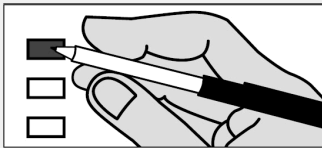
You MUST select ONE political preference below:

- GREEN PARTY (G)
- SOLIDARITY PARTY (S)
- REPUBLICAN PARTY (R)
- DEMOCRATIC PARTY (D)
- NONPARTISAN BALLOT (N)
- LIBERTARIAN PARTY (L)
- PARTY FOR SOCIALISM AND LIBERATION (SL)
- WE THE PEOPLE (W)
- NO LABELS (NL)

Instructions

- 1** You MUST select ONE political preference from the box above for your votes to count.
- 2** Vote ONLY for candidates within your selected preference. Votes for another political preference will not be counted.
- 3** You are eligible to vote for ALL of the Office of Hawaiian Affairs and County Contests on the back.

Making Selections



Completely fill in the box to the left of your choice with a black or blue pen.

If you vote for more candidates than allowed in a contest, your votes for that contest will not be counted.

If you make a mistake, request a replacement ballot at hnlvote.ehawaii.gov or call (808) 768-3800. Do not use whiteout.

View the digital voter guide and sign up for ballot notifications at elections.hawaii.gov

Green Party (G)

U.S. Senator
Vote For Not More Than One (1)
 POHLMAN, Emma Jane Avila

Solidarity Party (S)

No Candidates Filed

Republican Party (R)

U.S. Senator
Vote For Not More Than One (1)
 AMARAL, Melba
 DOLAN, Paul
 LAM, Adriel C.
 MCDERMOTT, Bob
 REYES, Arturo P.
 TIPON, Emmanuel

U.S. Representative, Dist I
Vote For Not More Than One (1)
 LARGEY, Patrick C.

State Senator, Dist 18
Vote For Not More Than One (1)
 SVRCINA, Emil

State Representative, Dist 38
Vote For Not More Than One (1)
 CHEAPE MATSUMOTO, Lauren

Democratic Party (D)

U.S. Senator
Vote For Not More Than One (1)
 CURTIS, Ron
 HIRONO, Mazie K.
 LEWMAN, Clyde McClain (Mac)

U.S. Representative, Dist I
Vote For Not More Than One (1)
 CASE, Ed
 HALE, Cecil R.

State Senator, Dist 18
Vote For Not More Than One (1)
 KIDANI, Michelle N.

State Representative, Dist 38
Vote For Not More Than One (1)
 OZAWA, Alexander Kekuanao'a

Nonpartisan Ballot (N)

U.S. Senator
Vote For Not More Than One (1)
 GIUFFRE, John (Raghu)

U.S. Representative, Dist I
Vote For Not More Than One (1)
 GRIFFIN, Calvin

Libertarian Party (L)

No Candidates Filed

Party for Socialism and Liberation (SL)

No Candidates Filed

We The People (W)

U.S. Senator
Vote For Not More Than One (1)
 BILLIONAIRE, Shelby Pikachu

No Labels (NL)

No Candidates Filed

Office of Hawaiian Affairs

Hawaii Resident Trustee
Vote For Not More Than One (1)

AKI, Z. Ka'apana

CERMELJ, Hope Alohalani

KAHELE, Kaiali'i

WALTJEN-KUILIPULE, Hulali

Molokai Resident Trustee
Vote For Not More Than One (1)

ALAPA, Luana

HALINIYAK, Gayla

LANKFORD-FAVORITO, Lu Ann

NIHIPALI, R. Kunani

At-Large Trustee
Vote For Not More Than One (1)

AHU ISA, Lei

AKINA, Keli'i

APO, Peter

KAHANAMOKU-TERUYA, Patty

KALIMA, Leona M.

KAWAAUHAU, Larry

LEE, Brendon Kalei'aina

County Contests

City and County of Honolulu

Mayor
Vote For Not More Than One (1)

BLANGIARDI, Rick

BOURGOIN, Duke

DICKS, Karl O.

JAMES, Choon

Prosecuting Attorney
Vote For Not More Than One (1)

ALM, Steve