

**Start Voting Here**

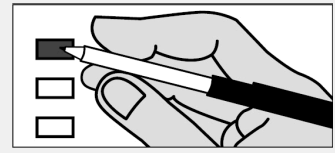
You MUST select ONE political preference below:

- GREEN PARTY (G)
- SOLIDARITY PARTY (S)
- REPUBLICAN PARTY (R)
- DEMOCRATIC PARTY (D)
- NONPARTISAN BALLOT (N)
- LIBERTARIAN PARTY (L)
- PARTY FOR SOCIALISM AND LIBERATION (SL)
- WE THE PEOPLE (W)
- NO LABELS (NL)

**Instructions**

- 1** You MUST select ONE political preference from the box above for your votes to count.
- 2** Vote ONLY for candidates within your selected preference. Votes for another political preference will not be counted.
- 3** You are eligible to vote for ALL of the Office of Hawaiian Affairs and County Contests on the back.

**Making Selections**



Completely fill in the box to the left of your choice with a black or blue pen.

If you vote for more candidates than allowed in a contest, your votes for that contest will not be counted.

If you make a mistake, request a replacement ballot at [hnlvote.ehawaii.gov](http://hnlvote.ehawaii.gov) or call (808) 768-3800. Do not use whiteout.

View the digital voter guide and sign up for ballot notifications at [elections.hawaii.gov](http://elections.hawaii.gov)

**Green Party (G)**

**U.S. Senator**  
Vote For Not More Than One (1)

POHLMAN, Emma Jane Avila

**Solidarity Party (S)**

No Candidates Filed

**Republican Party (R)**

**U.S. Senator**  
Vote For Not More Than One (1)

AMARAL, Melba

DOLAN, Paul

LAM, Adriel C.

MCDERMOTT, Bob

REYES, Arturo P.

TIPON, Emmanuel

**U.S. Representative, Dist I**  
Vote For Not More Than One (1)

LARGEY, Patrick C.

**Democratic Party (D)**

**U.S. Senator**  
Vote For Not More Than One (1)

CURTIS, Ron

HIRONO, Mazie K.

LEWMAN, Clyde McClain (Mac)

**U.S. Representative, Dist I**  
Vote For Not More Than One (1)

CASE, Ed

HALE, Cecil R.

**State Representative, Dist 35**  
Vote For Not More Than One (1)

BONIFACIO, Domineque E.P.

CHUN, Cory M.

RAHMAN PERREIRA, Ikeda

**Nonpartisan Ballot (N)**

**U.S. Senator**  
Vote For Not More Than One (1)

GIUFFRE, John (Raghu)

**U.S. Representative, Dist I**  
Vote For Not More Than One (1)

GRIFFIN, Calvin

**Libertarian Party (L)**

No Candidates Filed

**Party for Socialism and Liberation (SL)**

No Candidates Filed

**We The People (W)**

**U.S. Senator**  
Vote For Not More Than One (1)

BILLIONAIRE, Shelby Pikachu

**No Labels (NL)**

No Candidates Filed

<b>Office of Hawaiian Affairs</b>	
<b>Hawaii Resident Trustee</b>	
<b>Vote For Not More Than One (1)</b>	
<input type="checkbox"/>	AKI, Z. Ka'apana
<input type="checkbox"/>	CERMELJ, Hope Alohalani
<input type="checkbox"/>	KAHELE, Kaiali'i
<input type="checkbox"/>	WALTJEN-KUILIPULE, Hulali
<b>Molokai Resident Trustee</b>	
<b>Vote For Not More Than One (1)</b>	
<input type="checkbox"/>	ALAPA, Luana
<input type="checkbox"/>	HALINIAK, Gayla
<input type="checkbox"/>	LANKFORD-FAVORITO, Lu Ann
<input type="checkbox"/>	NIHIPALI, R. Kunani
<b>At-Large Trustee</b>	
<b>Vote For Not More Than One (1)</b>	
<input type="checkbox"/>	AHU ISA, Lei
<input type="checkbox"/>	AKINA, Keli'i
<input type="checkbox"/>	APO, Peter
<input type="checkbox"/>	KAHANAMOKU-TERUYA, Patty
<input type="checkbox"/>	KALIMA, Leona M.
<input type="checkbox"/>	KAWAAUHAU, Larry
<input type="checkbox"/>	LEE, Brendon Kalei'aina

<b>County Contests</b>	
<b>City and County of Honolulu</b>	
<b>Mayor</b>	
<b>Vote For Not More Than One (1)</b>	
<input type="checkbox"/>	BLANGIARDI, Rick
<input type="checkbox"/>	BOURGOIN, Duke
<input type="checkbox"/>	DICKS, Karl O.
<input type="checkbox"/>	JAMES, Choon
<b>Prosecuting Attorney</b>	
<b>Vote For Not More Than One (1)</b>	
<input type="checkbox"/>	ALM, Steve
<b>Councilmember, Dist IX</b>	
<b>Vote For Not More Than One (1)</b>	
<input type="checkbox"/>	TULBA, Augie (Augie T)