

Start Voting Here

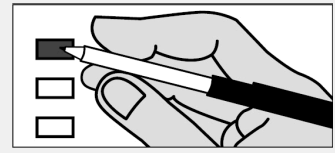
You MUST select ONE political preference below:

- GREEN PARTY (G)
- SOLIDARITY PARTY (S)
- REPUBLICAN PARTY (R)
- DEMOCRATIC PARTY (D)
- NONPARTISAN BALLOT (N)
- LIBERTARIAN PARTY (L)
- PARTY FOR SOCIALISM AND LIBERATION (SL)
- WE THE PEOPLE (W)
- NO LABELS (NL)

Instructions

- 1** You MUST select ONE political preference from the box above for your votes to count.
- 2** Vote ONLY for candidates within your selected preference. Votes for another political preference will not be counted.
- 3** You are eligible to vote for ALL of the Office of Hawaiian Affairs and County Contests on the back.

Making Selections



Completely fill in the box to the left of your choice with a black or blue pen.

If you vote for more candidates than allowed in a contest, your votes for that contest will not be counted.

If you make a mistake, request a replacement ballot at hnlvote.ehawaii.gov or call (808) 768-3800. Do not use whiteout.

View the digital voter guide and sign up for ballot notifications at elections.hawaii.gov

Green Party (G)

U.S. Senator
Vote For Not More Than One (1)

POHLMAN, Emma Jane Avila

Solidarity Party (S)

No Candidates Filed

Republican Party (R)

U.S. Senator
Vote For Not More Than One (1)

AMARAL, Melba

DOLAN, Paul

LAM, Adriel C.

MCDERMOTT, Bob

REYES, Arturo P.

TIPON, Emmanuel

U.S. Representative, Dist I
Vote For Not More Than One (1)

LARGEY, Patrick C.

Democratic Party (D)

U.S. Senator
Vote For Not More Than One (1)

CURTIS, Ron

HIRONO, Mazie K.

LEWMAN, Clyde McClain (Mac)

U.S. Representative, Dist I
Vote For Not More Than One (1)

CASE, Ed

HALE, Cecil R.

State Representative, Dist 25
Vote For Not More Than One (1)

IWAMOTO, Kim Coco

SAIKI, Scott K.

Nonpartisan Ballot (N)

U.S. Senator
Vote For Not More Than One (1)

GIUFFRE, John (Raghu)

U.S. Representative, Dist I
Vote For Not More Than One (1)

GRIFFIN, Calvin

Libertarian Party (L)

No Candidates Filed

Party for Socialism and Liberation (SL)

No Candidates Filed

We The People (W)

U.S. Senator
Vote For Not More Than One (1)

BILLIONAIRE, Shelby Pikachu

No Labels (NL)

No Candidates Filed

Office of Hawaiian Affairs	
Hawaii Resident Trustee	
Vote For Not More Than One (1)	
<input type="checkbox"/>	AKI, Z. Ka'apana
<input type="checkbox"/>	CERMELJ, Hope Alohalani
<input type="checkbox"/>	KAHELE, Kaiali'i
<input type="checkbox"/>	WALTJEN-KUILIPULE, Hulali
Molokai Resident Trustee	
Vote For Not More Than One (1)	
<input type="checkbox"/>	ALAPA, Luana
<input type="checkbox"/>	HALINIAK, Gayla
<input type="checkbox"/>	LANKFORD-FAVORITO, Lu Ann
<input type="checkbox"/>	NIHIPALI, R. Kunani
At-Large Trustee	
Vote For Not More Than One (1)	
<input type="checkbox"/>	AHU ISA, Lei
<input type="checkbox"/>	AKINA, Keli'i
<input type="checkbox"/>	APO, Peter
<input type="checkbox"/>	KAHANAMOKU-TERUYA, Patty
<input type="checkbox"/>	KALIMA, Leona M.
<input type="checkbox"/>	KAWAAUHAU, Larry
<input type="checkbox"/>	LEE, Brendon Kalei'aina

County Contests	
City and County of Honolulu	
Mayor	
Vote For Not More Than One (1)	
<input type="checkbox"/>	BLANGIARDI, Rick
<input type="checkbox"/>	BOURGOIN, Duke
<input type="checkbox"/>	DICKS, Karl O.
<input type="checkbox"/>	JAMES, Choon
Prosecuting Attorney	
Vote For Not More Than One (1)	
<input type="checkbox"/>	ALM, Steve