

**Start Voting Here**

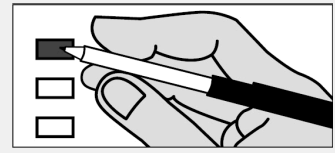
You MUST select ONE political preference below:

- GREEN PARTY (G)
- SOLIDARITY PARTY (S)
- REPUBLICAN PARTY (R)
- DEMOCRATIC PARTY (D)
- NONPARTISAN BALLOT (N)
- LIBERTARIAN PARTY (L)
- PARTY FOR SOCIALISM AND LIBERATION (SL)
- WE THE PEOPLE (W)
- NO LABELS (NL)

**Instructions**

- 1** You MUST select ONE political preference from the box above for your votes to count.
- 2** Vote ONLY for candidates within your selected preference. Votes for another political preference will not be counted.
- 3** You are eligible to vote for ALL of the Office of Hawaiian Affairs and County Contests on the back.

**Making Selections**



Completely fill in the box to the left of your choice with a black or blue pen.

If you vote for more candidates than allowed in a contest, your votes for that contest will not be counted.

If you make a mistake, contact the Kaua'i Elections Division at (808) 241-4800 for a replacement ballot. Do not use whiteout.

View the digital voter guide and sign up for ballot notifications at [elections.hawaii.gov](http://elections.hawaii.gov)

**Green Party (G)**

**U.S. Senator**  
Vote For Not More Than One (1)

POHLMAN, Emma Jane Avila

**Solidarity Party (S)**

No Candidates Filed

**Republican Party (R)**

**U.S. Senator**  
Vote For Not More Than One (1)

AMARAL, Melba

DOLAN, Paul

LAM, Adriel C.

MCDERMOTT, Bob

REYES, Arturo P.

TIPON, Emmanuel

**U.S. Representative, Dist II**  
Vote For Not More Than One (1)

BOND, Steve

**State Representative, Dist 17**  
Vote For Not More Than One (1)

JAUCH, Michael H.

**Democratic Party (D)**

**U.S. Senator**  
Vote For Not More Than One (1)

CURTIS, Ron

HIRONO, Mazie K.

LEWMAN, Clyde McClain (Mac)

**U.S. Representative, Dist II**  
Vote For Not More Than One (1)

TOKUDA, Jill N.

**State Representative, Dist 17**  
Vote For Not More Than One (1)

MORIKAWA, Daynette (Dee)

**Nonpartisan Ballot (N)**

**U.S. Senator**  
Vote For Not More Than One (1)

GIUFFRE, John (Raghu)

**U.S. Representative, Dist II**  
Vote For Not More Than One (1)

MEYER, Randall Kelly

**Libertarian Party (L)**

**U.S. Representative, Dist II**  
Vote For Not More Than One (1)

TOMAN, Aaron

**Party for Socialism and Liberation (SL)**

No Candidates Filed

**We The People (W)**

**U.S. Senator**  
Vote For Not More Than One (1)

BILLIONAIRE, Shelby Pikachu

**No Labels (NL)**

No Candidates Filed

**Office of Hawaiian Affairs**

**Hawaii Resident Trustee**  
Vote For Not More Than One (1)

AKI, Z. Ka'apana

CERMELJ, Hope Alohalani

KAHELE, Kaiali'i

WALTJEN-KUILIPULE, Hulali

**Molokai Resident Trustee**  
Vote For Not More Than One (1)

ALAPA, Luana

HALINIAK, Gayla

LANKFORD-FAVORITO, Lu Ann

NIHIPALI, R. Kunani

**At-Large Trustee**  
Vote For Not More Than One (1)

AHU ISA, Lei

AKINA, Keli'i

APO, Peter

KAHANAMOKU-TERUYA, Patty

KALIMA, Leona M.

KAWAAUHAU, Larry

LEE, Brendon Kalei'aina

**County Contests**

**County of Kaua'i**

**Prosecuting Attorney**  
Vote For Not More Than One (1)

LIKE, Rebecca V.

**Councilmember**  
Vote For Not More Than Seven (7)

APILADO, Abe, Jr. (Aba-G)

BULOSAN, Addison

CARVALHO, Bernard P., Jr.

COWDEN, Felicia

CUMMINGS, Sherri

DECOSTA, Billy D.

DES, Ana Mo

HOLLAND, Fern Anuenue

KAGAWA, Ross

KANESHIRO, Arryl J.

KEAHIOLALO, W. Butch

KUALII, KipuKai

LINDNER, Jeffrey

NELSON, Jacquelyn (Jakki)

RAPOZO, Mel

THOMAS, Bart

YAGO, Clint A., Sr.