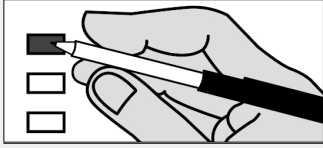


**Instructions**

**Making Selections**



Completely fill in the box to the left of your choice with a black or blue pen.

If you vote for more candidates than allowed in a contest, your votes for that contest will not be counted.

If you make a mistake, contact the Kaua'i Elections Division at (808) 241-4800 for a replacement ballot. Do not use whiteout.

View the digital voter guide and sign up for ballot notifications at [elections.hawaii.gov](http://elections.hawaii.gov)

**Federal Contests  
(continued)**

**U.S. Senator**  
Vote For Not More Than One (1)

(W) BILLIONAIRE, Shelby Pikachu

(D) HIRONO, Mazie K.

(R) MCDERMOTT, Bob

(G) POHLMAN, Emma Jane Avila

---

**U.S. Representative, Dist II**  
Vote For Not More Than One (1)

(R) BOND, Steve

(N) MEYER, Randall Kelly

(D) TOKUDA, Jill N.

(L) TOMAN, Aaron

**State Contests**

**State Representative, Dist 16**  
Vote For Not More Than One (1)

(D) EVSLIN, Luke A.

(R) YODER, Steve

**County Contests  
County of Kaua'i**

**Councilmember**  
Vote For Not More Than Seven (7)

APILADO, Abe, Jr. (Aba-G)

BULOSAN, Addison

CARVALHO, Bernard P., Jr.

COWDEN, Felicia

CUMMINGS, Sherri

DECOSTA, Billy D.

HOLLAND, Fern Anuenue

KAGAWA, Ross

KANESHIRO, Arryl J.

KEAHIOLALO, W. Butch

KUALII, KipuKai

NELSON, Jacquelyn (Jakki)

RAPOZO, Mel

THOMAS, Bart

**Continue to Amendment Questions on Page 2**

**Start Voting Here**

**Federal Contests**

**President and Vice President**  
Vote For Not More Than One (1)

(SL) DE LA CRUZ, Claudia  
For PRESIDENT  
GARCIA, Karina  
For VICE PRESIDENT

(D) HARRIS, Kamala D.  
For PRESIDENT  
WALZ, Tim  
For VICE PRESIDENT

(L) OLIVER, Chase  
For PRESIDENT  
TER MAAT, Mike  
For VICE PRESIDENT

(S) SONSKI, Peter  
For PRESIDENT  
ONAK, Lauren  
For VICE PRESIDENT

(G) STEIN, Jill  
For PRESIDENT  
WARE, Rudolph  
For VICE PRESIDENT

(R) TRUMP, Donald J.  
For PRESIDENT  
VANCE, JD  
For VICE PRESIDENT

**Office of Hawaiian Affairs**

**Molokai Resident Trustee**  
Vote For Not More Than One (1)

ALAPA, Luana

NIHIPALI, R. Kunani

---

**Kauai Resident Trustee**  
Vote For Not More Than One (1)

AHUNA, Dan

LINDSEY, Laura A.

---

**At-Large Trustee**  
Vote For Not More Than One (1)

AHU ISA, Lei

AKINA, Keli'i

**Amendments to the State Constitution Proposed by the Thirty-Second Legislature**

**Question #1**

Shall the state constitution be amended to repeal the legislature's authority to reserve marriage to opposite-sex couples?

YES

NO

**Question #2**

Shall the Constitution of the State of Hawaii be amended to make the appointment and confirmation process for district court judges the same as the appointment and confirmation process for supreme court justices and intermediate court of appeals and circuit court judges, which would require:

(1) The Judicial Selection Commission to present the Chief Justice with a list of not less than four and not more than six nominees for a vacancy;

(2) A district court appointee to be automatically considered appointed if the Senate fails to reject the appointment within thirty days of receiving the appointment notice;

(3) The Chief Justice to make another appointment from the list of district court nominees within ten days if the Senate rejects an appointment; and

(4) The appointment and consent procedure to be followed until a valid appointment is made, or failing this, the Judicial Selection Commission to make the appointment from the list of nominees, without Senate consent?

YES

NO

**Proposed Amendments to the Kaua'i County Charter**

**Relating to Police Commission Investigations.**

Shall the Police Commission's 90-day window for reporting written investigation results start when the Commission receives the investigation report?

YES

NO

**Relating to Cost Control Commission Reports.**

Shall the Cost Control Commission be authorized to recommend increased costs if they are expected to generate future cost savings or efficiencies?

YES

NO

**Relating to the Public Access, Open Space & Natural Resources Preservation Fund.**

Shall up to 5% of the County's Open Space Fund be available for the maintenance of lands, property entitlements, or improvements that were paid for by the Fund?

YES

NO

**Relating to Surety Bonds.**

Shall the Charter be amended to allow the use of insurance policies for certain or all employees to protect the County against financial loss?

YES

NO

**Relating to Ex-officio Youth Position on County Boards and Commissions.**

Shall the Charter be amended to establish ex-officio positions for youth on Boards and Commissions to be filled by Kaua'i resident high school juniors or seniors?

YES

NO