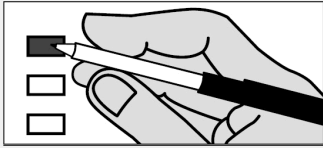


Instructions

Making Selections



Completely fill in the box to the left of your choice with a black or blue pen.

If you vote for more candidates than allowed in a contest, your votes for that contest will not be counted.

If you make a mistake, contact the Kaua'i Elections Division at (808) 241-4800 for a replacement ballot. Do not use whiteout.

View the digital voter guide and sign up for ballot notifications at elections.hawaii.gov

Federal Contests (continued)

Table with 2 columns: Party/Label and Candidate Name. Includes U.S. Senator and U.S. Representative, Dist II contests.

State Contests

Table with 2 columns: Party/Label and Candidate Name. Includes State Representative, Dist 15 contest.

County Contests County of Kaua'i

Table with 2 columns: Party/Label and Candidate Name. Includes Councilmember contest.

Continue to Amendment Questions on Page 2

Start Voting Here

Federal Contests

Table with 2 columns: Party/Label and Candidate Name. Includes President and Vice President contest.

Office of Hawaiian Affairs

Table with 2 columns: Party/Label and Candidate Name. Includes Molokai Resident Trustee, Kauai Resident Trustee, and At-Large Trustee contests.

Amendments to the State Constitution Proposed by the Thirty-Second Legislature

Question #1
Shall the state constitution be amended to repeal the legislature's authority to reserve marriage to opposite-sex couples?
 YES
 NO

Question #2
Shall the Constitution of the State of Hawaii be amended to make the appointment and confirmation process for district court judges the same as the appointment and confirmation process for supreme court justices and intermediate court of appeals and circuit court judges, which would require:

(1) The Judicial Selection Commission to present the Chief Justice with a list of not less than four and not more than six nominees for a vacancy;

(2) A district court appointee to be automatically considered appointed if the Senate fails to reject the appointment within thirty days of receiving the appointment notice;

(3) The Chief Justice to make another appointment from the list of district court nominees within ten days if the Senate rejects an appointment; and

(4) The appointment and consent procedure to be followed until a valid appointment is made, or failing this, the Judicial Selection Commission to make the appointment from the list of nominees, without Senate consent?

 YES
 NO

Proposed Amendments to the Kaua'i County Charter

Relating to Police Commission Investigations.
Shall the Police Commission's 90-day window for reporting written investigation results start when the Commission receives the investigation report?
 YES
 NO

Relating to Cost Control Commission Reports.
Shall the Cost Control Commission be authorized to recommend increased costs if they are expected to generate future cost savings or efficiencies?
 YES
 NO

Relating to the Public Access, Open Space & Natural Resources Preservation Fund.
Shall up to 5% of the County's Open Space Fund be available for the maintenance of lands, property entitlements, or improvements that were paid for by the Fund?
 YES
 NO

Relating to Surety Bonds.
Shall the Charter be amended to allow the use of insurance policies for certain or all employees to protect the County against financial loss?
 YES
 NO

Relating to Ex-officio Youth Position on County Boards and Commissions.
Shall the Charter be amended to establish ex-officio positions for youth on Boards and Commissions to be filled by Kaua'i resident high school juniors or seniors?
 YES
 NO