

Start Voting Here

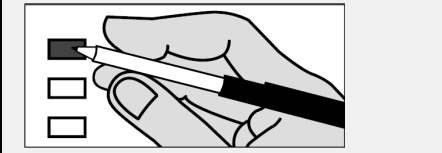
You MUST select ONE political preference below:

- GREEN PARTY (G)
- SOLIDARITY PARTY (S)
- REPUBLICAN PARTY (R)
- DEMOCRATIC PARTY (D)
- NONPARTISAN BALLOT (N)
- LIBERTARIAN PARTY (L)
- PARTY FOR SOCIALISM AND LIBERATION (SL)
- WE THE PEOPLE (W)
- NO LABELS (NL)

Instructions

- 1** You MUST select ONE political preference from the box above for your votes to count.
- 2** Vote ONLY for candidates within your selected preference. Votes for another political preference will not be counted.
- 3** You are eligible to vote for ALL of the Office of Hawaiian Affairs and County Contests on the back.

Making Selections



Completely fill in the box to the left of your choice with a black or blue pen.

If you vote for more candidates than allowed in a contest, your votes for that contest will not be counted.

If you make a mistake, contact the Maui Elections Division at (808) 270-7749 for a replacement ballot. Do not use whiteout.

View the digital voter guide and sign up for ballot notifications at elections.hawaii.gov

Green Party (G)

U.S. Senator
Vote For Not More Than One (1)

POHLMAN, Emma Jane Avila

Solidarity Party (S)

No Candidates Filed

Republican Party (R)

U.S. Senator
Vote For Not More Than One (1)

AMARAL, Melba

DOLAN, Paul

LAM, Adriel C.

MCDERMOTT, Bob

REYES, Arturo P.

TIPON, Emmanuel

U.S. Representative, Dist II
Vote For Not More Than One (1)

BOND, Steve

State Senator, Dist 7
Vote For Not More Than One (1)

MACARAEG, Gabby

State Representative, Dist 13
Vote For Not More Than One (1)

ADAM, Scott

Democratic Party (D)

U.S. Senator
Vote For Not More Than One (1)

CURTIS, Ron

HIRONO, Mazie K.

LEWMAN, Clyde McClain (Mac)

U.S. Representative, Dist II
Vote For Not More Than One (1)

TOKUDA, Jill N.

State Senator, Dist 7
Vote For Not More Than One (1)

DECOITE, Lynn Pualani

State Representative, Dist 13
Vote For Not More Than One (1)

CLARK, Linda Ha'i

POEPOE, Mahina

Nonpartisan Ballot (N)

U.S. Senator
Vote For Not More Than One (1)

GIUFFRE, John (Raghu)

U.S. Representative, Dist II
Vote For Not More Than One (1)

MEYER, Randall Kelly

Libertarian Party (L)

U.S. Representative, Dist II
Vote For Not More Than One (1)

TOMAN, Aaron

Party for Socialism and Liberation (SL)

No Candidates Filed

We The People (W)


U.S. Senator
Vote For Not More Than One (1)

BILLIONAIRE, Shelby Pikachu

No Labels (NL)

No Candidates Filed

 Office of Hawaiian Affairs	
Hawaii Resident Trustee	
Vote For Not More Than One (1)	
<input type="checkbox"/>	AKI, Z. Ka'apana
<input type="checkbox"/>	CERMELJ, Hope Alohalani
<input type="checkbox"/>	KAHELE, Kaiali'i
<input type="checkbox"/>	WALTJEN-KUILIPULE, Hulali
Molokai Resident Trustee	
Vote For Not More Than One (1)	
<input type="checkbox"/>	ALAPA, Luana
<input type="checkbox"/>	HALINIAK, Gayla
<input type="checkbox"/>	LANKFORD-FAVORITO, Lu Ann
<input type="checkbox"/>	NIHIPALI, R. Kunani
At-Large Trustee	
Vote For Not More Than One (1)	
<input type="checkbox"/>	AHU ISA, Lei
<input type="checkbox"/>	AKINA, Keli'i
<input type="checkbox"/>	APO, Peter
<input type="checkbox"/>	KAHANAMOKU-TERUYA, Patty
<input type="checkbox"/>	KALIMA, Leona M.
<input type="checkbox"/>	KAWAAUHAU, Larry
<input type="checkbox"/>	LEE, Brendon Kalei'aina

 County Contests	
County of Maui	
Councilmember (South Maui)	
Vote For Not More Than One (1)	
<input type="checkbox"/>	COOK, Tom
<input type="checkbox"/>	KING, Kelly Takaya
<input type="checkbox"/>	PRONES, Johnny Keoni
Councilmember (Upcountry)	
Vote For Not More Than One (1)	
<input type="checkbox"/>	CODELIA, Edward (Ed)
<input type="checkbox"/>	CRUZ, Jocelyn N.
<input type="checkbox"/>	SUGIMURA, Yuki Lei Kashiwa