

**Start Voting Here**

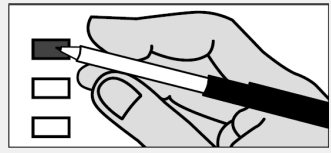
You MUST select ONE political preference below:

- GREEN PARTY (G)
- SOLIDARITY PARTY (S)
- REPUBLICAN PARTY (R)
- DEMOCRATIC PARTY (D)
- NONPARTISAN BALLOT (N)
- LIBERTARIAN PARTY (L)
- PARTY FOR SOCIALISM AND LIBERATION (SL)
- WE THE PEOPLE (W)
- NO LABELS (NL)

**Instructions**

- 1** You MUST select ONE political preference from the box above for your votes to count.
- 2** Vote ONLY for candidates within your selected preference. Votes for another political preference will not be counted.
- 3** You are eligible to vote for ALL of the Office of Hawaiian Affairs and County Contests on the back.

**Making Selections**



Completely fill in the box to the left of your choice with a black or blue pen.

If you vote for more candidates than allowed in a contest, your votes for that contest will not be counted.

If you make a mistake, contact the Maui Elections Division at (808) 270-7749 for a replacement ballot. Do not use whiteout.

View the digital voter guide and sign up for ballot notifications at [elections.hawaii.gov](http://elections.hawaii.gov)

**Green Party (G)**

**U.S. Senator**  
Vote For Not More Than One (1)  
 POHLMAN, Emma Jane Avila

**State Representative, Dist 12**  
Vote For Not More Than One (1)  
 RYAN, Rita M.

**Solidarity Party (S)**

No Candidates Filed

**Republican Party (R)**

**U.S. Senator**  
Vote For Not More Than One (1)  
 AMARAL, Melba  
 DOLAN, Paul  
 LAM, Adriel C.  
 MCDERMOTT, Bob  
 REYES, Arturo P.  
 TIPON, Emmanuel

**U.S. Representative, Dist II**  
Vote For Not More Than One (1)  
 BOND, Steve

**State Senator, Dist 7**  
Vote For Not More Than One (1)  
 MACARAEG, Gabby

**State Representative, Dist 12**  
Vote For Not More Than One (1)  
 JOHNSON, Dan

**Democratic Party (D)**

**U.S. Senator**  
Vote For Not More Than One (1)  
 CURTIS, Ron  
 HIRONO, Mazie K.  
 LEWMAN, Clyde McClain (Mac)

**U.S. Representative, Dist II**  
Vote For Not More Than One (1)  
 TOKUDA, Jill N.

**State Senator, Dist 7**  
Vote For Not More Than One (1)  
 DECOITE, Lynn Pualani

**State Representative, Dist 12**  
Vote For Not More Than One (1)  
 YAMASHITA, Kyle T.

**Nonpartisan Ballot (N)**

**U.S. Senator**  
Vote For Not More Than One (1)  
 GIUFFRE, John (Raghu)

**U.S. Representative, Dist II**  
Vote For Not More Than One (1)  
 MEYER, Randall Kelly

**Libertarian Party (L)**

**U.S. Representative, Dist II**  
Vote For Not More Than One (1)  
 TOMAN, Aaron

**Party for Socialism and Liberation (SL)**


No Candidates Filed


**We The People (W)**

**U.S. Senator**  
Vote For Not More Than One (1)  
 BILLIONAIRE, Shelby Pikachu

**No Labels (NL)**

No Candidates Filed

 <b>Office of Hawaiian Affairs</b>	
<b>Hawaii Resident Trustee</b>	
<b>Vote For Not More Than One (1)</b>	
<input type="checkbox"/>	AKI, Z. Ka'apana
<input type="checkbox"/>	CERMELJ, Hope Alohalani
<input type="checkbox"/>	KAHELE, Kaiali'i
<input type="checkbox"/>	WALTJEN-KUILIPULE, Hulali
<b>Molokai Resident Trustee</b>	
<b>Vote For Not More Than One (1)</b>	
<input type="checkbox"/>	ALAPA, Luana
<input type="checkbox"/>	HALINIAK, Gayla
<input type="checkbox"/>	LANKFORD-FAVORITO, Lu Ann
<input type="checkbox"/>	NIHIPALI, R. Kunani
<b>At-Large Trustee</b>	
<b>Vote For Not More Than One (1)</b>	
<input type="checkbox"/>	AHU ISA, Lei
<input type="checkbox"/>	AKINA, Keli'i
<input type="checkbox"/>	APO, Peter
<input type="checkbox"/>	KAHANAMOKU-TERUYA, Patty
<input type="checkbox"/>	KALIMA, Leona M.
<input type="checkbox"/>	KAWAAUHAU, Larry
<input type="checkbox"/>	LEE, Brendon Kalei'aina

 <b>County Contests</b>	
<b>County of Maui</b>	
<b>Councilmember (South Maui)</b>	
<b>Vote For Not More Than One (1)</b>	
<input type="checkbox"/>	COOK, Tom
<input type="checkbox"/>	KING, Kelly Takaya
<input type="checkbox"/>	PRONES, Johnny Keoni
<b>Councilmember (Upcountry)</b>	
<b>Vote For Not More Than One (1)</b>	
<input type="checkbox"/>	CODELIA, Edward (Ed)
<input type="checkbox"/>	CRUZ, Jocelyn N.
<input type="checkbox"/>	SUGIMURA, Yuki Lei Kashiwa