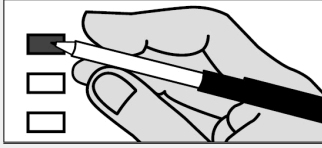


**Instructions**

**Making Selections**



Completely fill in the box to the left of your choice with a black or blue pen.

If you vote for more candidates than allowed in a contest, your votes for that contest will not be counted.

If you make a mistake, request a replacement ballot at [elections.hawaiicounty.gov](http://elections.hawaiicounty.gov) or call (808) 961-8277. Do not use whiteout.

View the digital voter guide and sign up for ballot notifications at [elections.hawaii.gov](http://elections.hawaii.gov)

**Start Voting Here**

**Federal Contests**

**President and Vice President**

**Vote For Not More Than One (1)**

- (SL) DE LA CRUZ, Claudia  
For PRESIDENT  
GARCIA, Karina  
For VICE PRESIDENT
- (D) HARRIS, Kamala D.  
For PRESIDENT  
WALZ, Tim  
For VICE PRESIDENT
- (L) OLIVER, Chase  
For PRESIDENT  
TER MAAT, Mike  
For VICE PRESIDENT
- (S) SONSKI, Peter  
For PRESIDENT  
ONAK, Lauren  
For VICE PRESIDENT
- (G) STEIN, Jill  
For PRESIDENT  
WARE, Rudolph  
For VICE PRESIDENT
- (R) TRUMP, Donald J.  
For PRESIDENT  
VANCE, JD  
For VICE PRESIDENT

**Federal Contests  
(continued)**

**U.S. Senator**

**Vote For Not More Than One (1)**

- (W) BILLIONAIRE, Shelby Pikachu
- (D) HIRONO, Mazie K.
- (R) MCDERMOTT, Bob
- (G) POHLMAN, Emma Jane Avila

**U.S. Representative, Dist II**

**Vote For Not More Than One (1)**

- (R) BOND, Steve
- (N) MEYER, Randall Kelly
- (D) TOKUDA, Jill N.
- (L) TOMAN, Aaron

**State Contests**

**State Senator, Dist 3**

**Vote For Not More Than One (1)**

- (D) KANUHA, Dru Mamo
- (R) SULLIVAN, Kurt (Sulli)

**State Representative, Dist 7**

**Vote For Not More Than One (1)**

- (R) DALHOUSE, Timothy A. (Tim)
- (D) LOWEN, Nicole

**Office of Hawaiian Affairs**

**Molokai Resident Trustee**

**Vote For Not More Than One (1)**

- ALAPA, Luana
- NIHIPALI, R. Kunani

**Kauai Resident Trustee**

**Vote For Not More Than One (1)**

- AHUNA, Dan
- LINDSEY, Laura A.

**At-Large Trustee**

**Vote For Not More Than One (1)**

- AHU ISA, Lei
- AKINA, Keli'i

**County Contests  
County of Hawai'i**

**Mayor**

**Vote For Not More Than One (1)**

- ALAMEDA, C. Kimo
- ROTH, Mitch

**Continue to Amendment  
Questions on Page 2**

**Amendments to the State Constitution Proposed by the Thirty-Second Legislature**

**Question #1**  
Shall the state constitution be amended to repeal the legislature's authority to reserve marriage to opposite-sex couples?  
 YES  
 NO

**Question #2**  
Shall the Constitution of the State of Hawaii be amended to make the appointment and confirmation process for district court judges the same as the appointment and confirmation process for supreme court justices and intermediate court of appeals and circuit court judges, which would require:  
  
(1) The Judicial Selection Commission to present the Chief Justice with a list of not less than four and not more than six nominees for a vacancy;  
  
(2) A district court appointee to be automatically considered appointed if the Senate fails to reject the appointment within thirty days of receiving the appointment notice;  
  
(3) The Chief Justice to make another appointment from the list of district court nominees within ten days if the Senate rejects an appointment; and  
  
(4) The appointment and consent procedure to be followed until a valid appointment is made, or failing this, the Judicial Selection Commission to make the appointment from the list of nominees, without Senate consent?  
  
 YES  
 NO

**Proposed Amendments to the Hawai'i County Charter**

**1. Hawai'i: County Council Vacancy in Office**  
Shall the Hawai'i County Charter be amended to provide that any vacancy on the County Council that occurs or exists after a person was duly elected to fill that seat for the upcoming Council term shall be filled by that duly elected successor for the remainder of the unexpired term?  
  
 YES  
 NO

**2. Hawai'i: Mayoral Appointment of Department Heads**  
Shall the Hawai'i County Charter be amended to require the Mayor to appoint department heads within 30 days of the start of each mayoral term and within 60 days for any vacancy in office that occurs during the mayoral term?  
  
 YES  
 NO

**3. Hawai'i: Term of Office for the Cost of Government Commission**  
Shall the Hawai'i County Charter be amended to increase the term length for members of the Cost of Government Commission from eleven to twenty-two months and extend the deadline for the Commission to submit its report from eleven months after appointment to twenty months after appointment?  
  
 YES  
 NO