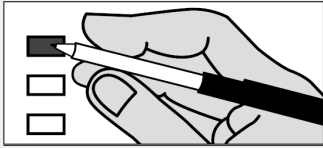


Instructions

Making Selections



Completely fill in the box to the left of your choice with a black or blue pen.

If you vote for more candidates than allowed in a contest, your votes for that contest will not be counted.

If you make a mistake, request a replacement ballot at elections.hawaiicounty.gov or call (808) 961-8277. Do not use whiteout.

View the digital voter guide and sign up for ballot notifications at elections.hawaii.gov

Start Voting Here

Federal Contests

President and Vice President

Vote For Not More Than One (1)

- (SL) DE LA CRUZ, Claudia
For PRESIDENT
GARCIA, Karina
For VICE PRESIDENT
- (D) HARRIS, Kamala D.
For PRESIDENT
WALZ, Tim
For VICE PRESIDENT
- (L) OLIVER, Chase
For PRESIDENT
TER MAAT, Mike
For VICE PRESIDENT
- (S) SONSKI, Peter
For PRESIDENT
ONAK, Lauren
For VICE PRESIDENT
- (G) STEIN, Jill
For PRESIDENT
WARE, Rudolph
For VICE PRESIDENT
- (R) TRUMP, Donald J.
For PRESIDENT
VANCE, JD
For VICE PRESIDENT

**Federal Contests
(continued)**

U.S. Senator

Vote For Not More Than One (1)

- (W) BILLIONAIRE, Shelby Pikachu
- (D) HIRONO, Mazie K.
- (R) MCDERMOTT, Bob
- (G) POHLMAN, Emma Jane Avila

U.S. Representative, Dist II

Vote For Not More Than One (1)

- (R) BOND, Steve
- (N) MEYER, Randall Kelly
- (D) TOKUDA, Jill N.
- (L) TOMAN, Aaron

State Contests

State Senator, Dist 3

Vote For Not More Than One (1)

- (D) KANUHA, Dru Mamo
- (R) SULLIVAN, Kurt (Sulli)

State Representative, Dist 5

Vote For Not More Than One (1)

- (L) FOGEL, Frederick F.
- (D) KAPELA, Jeanne
- (R) OYAMA, Ashley

Office of Hawaiian Affairs

Molokai Resident Trustee

Vote For Not More Than One (1)

- ALAPA, Luana
- NIHIPALI, R. Kunani

Kauai Resident Trustee

Vote For Not More Than One (1)

- AHUNA, Dan
- LINDSEY, Laura A.

At-Large Trustee

Vote For Not More Than One (1)

- AHU ISA, Lei
- AKINA, Keli'i

**County Contests
County of Hawai'i**

Mayor

Vote For Not More Than One (1)

- ALAMEDA, C. Kimo
- ROTH, Mitch

**Continue to Amendment
Questions on Page 2**

Amendments to the State Constitution Proposed by the Thirty-Second Legislature

Question #1
Shall the state constitution be amended to repeal the legislature's authority to reserve marriage to opposite-sex couples?
 YES
 NO

Question #2
Shall the Constitution of the State of Hawaii be amended to make the appointment and confirmation process for district court judges the same as the appointment and confirmation process for supreme court justices and intermediate court of appeals and circuit court judges, which would require:

(1) The Judicial Selection Commission to present the Chief Justice with a list of not less than four and not more than six nominees for a vacancy;

(2) A district court appointee to be automatically considered appointed if the Senate fails to reject the appointment within thirty days of receiving the appointment notice;

(3) The Chief Justice to make another appointment from the list of district court nominees within ten days if the Senate rejects an appointment; and

(4) The appointment and consent procedure to be followed until a valid appointment is made, or failing this, the Judicial Selection Commission to make the appointment from the list of nominees, without Senate consent?

 YES
 NO

Proposed Amendments to the Hawai'i County Charter

1. Hawai'i: County Council Vacancy in Office
Shall the Hawai'i County Charter be amended to provide that any vacancy on the County Council that occurs or exists after a person was duly elected to fill that seat for the upcoming Council term shall be filled by that duly elected successor for the remainder of the unexpired term?

 YES
 NO

2. Hawai'i: Mayoral Appointment of Department Heads
Shall the Hawai'i County Charter be amended to require the Mayor to appoint department heads within 30 days of the start of each mayoral term and within 60 days for any vacancy in office that occurs during the mayoral term?

 YES
 NO

3. Hawai'i: Term of Office for the Cost of Government Commission
Shall the Hawai'i County Charter be amended to increase the term length for members of the Cost of Government Commission from eleven to twenty-two months and extend the deadline for the Commission to submit its report from eleven months after appointment to twenty months after appointment?

 YES
 NO