

---

# **CANDIDATE'S MANUAL**

---

**2022 ELECTIONS**

---

THIS MANUAL IS A REFERENCE SOURCE. IT IS NOT TO BE USED AS THE AUTHORITY ON THE HAWAII ELECTION LAWS OR ANY OTHER LAWS FOR INDIVIDUALS OR CANDIDATES. IT IS DISTRIBUTED WITH THE UNDERSTANDING THAT THE OFFICE OF ELECTIONS IS NOT RENDERING LEGAL ADVICE AND THEREFORE THE MANUAL IS NOT TO BE USED AS A SUBSTITUTE FOR LEGAL COUNSEL FOR THE INDIVIDUAL OR CANDIDATE USING IT. IN CASE OF CONFLICT WITH THE MANUAL; THE LAW, REGULATION, OR RULE WILL APPLY.

READERS SHOULD CONSULT THE UNITED STATES CONSTITUTION, HAWAII STATE CONSTITUTION, HAWAII REVISED STATUTES, HAWAII ADMINISTRATIVE RULES, COUNTY CHARTERS, ATTORNEY GENERAL OPINIONS, AND OTHER SOURCES FOR A COMPLETE AND LEGAL BASIS OF THE LAW.

---

IF YOU HAVE ANY QUESTIONS ABOUT THE MATERIAL COVERED IN THIS MANUAL OR NEED FURTHER ASSISTANCE, PLEASE CONTACT US.

OFFICE OF ELECTIONS  
802 LEHUA AVENUE  
PEARL CITY, HAWAII 96782  
(808) 453-VOTE (8683)  
ELECTIONS@HAWAII.GOV  
ELECTIONS.HAWAII.GOV

# A MESSAGE FROM THE CHIEF ELECTION OFFICER

Dear Candidate:

Congratulations on your decision to seek public office! Your willingness to serve in a position of public trust strengthens the foundations of our democratic system and provides voters with more choices.

We ask that you please read this manual carefully as it provides an overview of elections in Hawaii and answers frequently asked questions about the candidate filing process.

We wish you the best on your campaign. If you need further assistance, please do not hesitate to call the Office of Elections at (808) 453-VOTE (8683). Neighbor island residents may call toll free at 1-800-442-VOTE (8683).

Very truly yours,

SCOTT T. NAGO  
Chief Election Officer

# ELECTION OFFICES

## STATE OF HAWAII, OFFICE OF ELECTIONS

Issues and files nomination papers for federal and state candidates as well as prints and counts ballots and provides voter education. Since the Office of Elections is responsible for the printing of ballots, it coordinates candidate filing, statewide.

802 Lehua Avenue  
Pearl City, Hawaii 96782  
(808) 453-VOTE (8683)  
elections@hawaii.gov

## COUNTY OF HAWAII, ELECTIONS DIVISION

Issues and files nomination papers for their county candidates as well as federal and state candidates on behalf of the Office of Elections. Additionally, the County Elections Division handles voter registration, the mailing and receipt of ballots, and establishes and operates voter service centers and places of deposit.

25 Aupuni Street, 1502  
Hilo, Hawaii 96720  
(808) 961-8277  
hiloelec@hawaiiicounty.gov

## COUNTY OF MAUI, ELECTIONS DIVISION

Issues and files nomination papers for their county candidates as well as federal and state candidates on behalf of the Office of Elections. Additionally, the County Elections Division handles voter registration, the mailing and receipt of ballots, and establishes and operates voter service centers and places of deposit.

200 South High Street  
Wailuku, Hawaii 96793  
(808) 270-7749  
county.clerk@mauicounty.us

## COUNTY OF KAUAI, ELECTIONS DIVISION

Issues and files nomination papers for their county candidates as well as federal and state candidates on behalf of the Office of Elections. Additionally, the County Elections Division handles voter registration, the mailing and receipt of ballots, and establishes and operates voter service centers and places of deposit.

4386 Rice Street, 101  
Lihue, Hawaii 96766  
(808) 241-4800  
elections@kauai.gov

## CITY & COUNTY OF HONOLULU, ELECTIONS DIVISION

Issues and files nomination papers for their city candidates. Additionally, the City Elections Division handles voter registration, the mailing and receipt of ballots, and establishes and operates voter service centers and places of deposit.

530 South King Street, 100  
Honolulu, Hawaii 96813  
(808) 768-3800  
elections@honolulu.gov

# TABLE OF CONTENTS

## ELECTIONS IN HAWAII

<u>Voter Registration</u>	<u>2</u>
<u>Mailing of Ballots</u>	<u>4</u>
<u>Reapportionment &amp; Redistricting</u>	<u>5</u>
<u>What's on my Ballot?</u>	<u>6</u>
<u>Returning the Voted Ballot</u>	<u>10</u>
<u>Voter Service Centers</u>	<u>12</u>
<u>Getting Results</u>	<u>14</u>
<u>Dates &amp; Deadlines</u>	<u>16</u>

## BECOMING A CANDIDATE

<u>Application</u>	<u>24</u>
<u>Nomination Paper</u>	<u>26</u>
<u>Filing Your Nomination Paper</u>	<u>30</u>
<u>Frequently Asked Questions</u>	<u>36</u>

## 2022 ELECTION CONTESTS

<u>Federal Office</u>	<u>43</u>
<u>State Office</u>	<u>46</u>
<u>County of Hawaii Office</u>	<u>52</u>
<u>County of Maui Office</u>	<u>54</u>
<u>County of Kauai Office</u>	<u>56</u>
<u>City and County of Honolulu Office</u>	<u>58</u>

## CAMPAIGNING

<u>Advertising</u>	<u>61</u>
<u>Campaign Signs Regulations</u>	<u>63</u>



# ELECTIONS IN HAWAII

In 2019, Hawaii transitioned to elections by mail. Now, registered voters automatically receive their ballot packet in the mail. Voters may choose to vote in person at a voter service center or request an absentee ballot be mailed to a different address if they are away from home during the election. Voted ballots are due by the close of voting, 7:00 PM, on Election Day.

Elections in Hawaii are managed and administered cooperatively by the state and counties. The Office of Elections is a state agency located on the island of Oahu and is overall responsible for Federal and State Elections. There are also four County Elections Divisions, each operated by the respective counties: Hawaii, Maui, Kauai, and Honolulu. The counties are responsible for their County Elections.

The Office of Elections manages the candidate filing process, the printing and counting of ballots, and voter education. Each County Elections Division manages voter registration, the mailing and receipt of ballots, voter service centers, and places of deposit.



# VOTER REGISTRATION

There are various opportunities to register to vote in Hawaii. To register to vote, a person must be a U.S. citizen, a resident of Hawaii, and at least 18 years old. Registrants may pre-register to vote at 16 years old and will automatically be mailed a ballot for each election after they turn 18.

- **Online:** Voter registration can be completed or updated online at [olvr.hawaii.gov](https://olvr.hawaii.gov) by individuals who have a Hawaii Driver License or Hawaii State ID.
- **Paper Application:** Paper voter registration applications are available at U.S. Post Offices, State Libraries, Satellite City Halls, most state agencies, County Elections Divisions, and the Office of Elections. The application can also be obtained and printed from [elections.hawaii.gov](https://elections.hawaii.gov). These applications can be submitted in person or mailed to the County Elections Division for processing.
- **DMV:** Voter registration is also a part of the Hawaii Driver License and State ID Applications. When applying for a driver license or State ID, individuals may opt to register to vote if they meet the qualifications.

Voters must be properly registered to ensure they receive a ballot. That means voters who have moved to a new residence or changed their name or mailing address must update their voter registration record. Updates can be made online, with a paper application, or at the DMV.

Voters can also check their voter registration online or by contacting the Office of Elections or their County Elections Division to confirm that their record is up to date.

Voters registering for the first time in Hawaii by a paper application must turn in their paper application at least 10 days before Election Day. However, voters can continue to register online. Additionally, same-day voter registration is available at a voter service center. Voter service centers are established by each County Elections Division, open 10 business days before and through Election Day. Within 10 days of Election Day, voters should register at a voter service center to ensure they receive their ballot and vote in time.



Voters do not indicate a political party preference when registering to vote in Hawaii. On the Primary Election ballot, a voter must select a political preference, but this information is kept anonymous and not tied to a voter's registration record in any way.

## VOTER DATA

Hawaii's voter registration data is an electronic file available for purchase, for election purposes only. Contact the applicable County Elections Division to request the voter registration data.

## VOTER REGISTRATION DRIVES AND MATERIALS

The Office of Elections provides materials for organizations and individuals, such as candidates, to register and educate eligible citizens statewide. Materials include, the Voter Registration Application, Absentee Ballot Application, and Hawaii Votes by Mail brochure.

The Voter Registration Application and Absentee Ballot Application are available in packs of 50.

A maximum of 100 of each application may be requested every 30 days. Applications are also available to print from [elections.hawaii.gov](https://elections.hawaii.gov). Completed applications may be submitted to the County Elections Division.

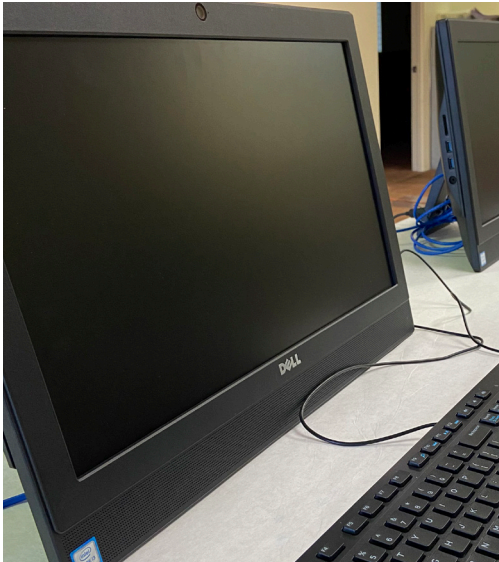
To request voter registration materials, complete the online intake at [elections.hawaii.gov](https://elections.hawaii.gov) or contact the Office of Elections, Voter Services, at (808) 453-VOTE (8683) or [elections@hawaii.gov](mailto:elections@hawaii.gov).



# MAILING OF BALLOTS

Registered voters receive a ballot packet in the mail at least 18 days before Election Day. Packets are sent by the County Elections Divisions through the United States Postal Service (USPS) and include a ballot, a secrecy sleeve, and a postage-paid return envelope. The secrecy sleeve further ensures anonymity during processing when the ballot is being removed from the return envelope with the voter's name, but it is optional.

Voters who do not receive a ballot in the mail should check that their voter registration is up-to-date and contact their County Elections Division for a replacement.



## VOTERS WITH SPECIAL NEEDS

When voting by mail, an Alternate Format Ballot (AFB) is available to voters with special needs and uniformed and overseas voters. The AFB is emailed to voters to mark using a compatible device like a computer or tablet. After voting the ballot, the voter signs a waiver and may choose to return the ballot electronically or by mail using the original return envelope. The AFB is also available to voters who have not received a ballot or need a replacement within 5 days of Election Day. Voters may request an AFB from their County Elections Division.

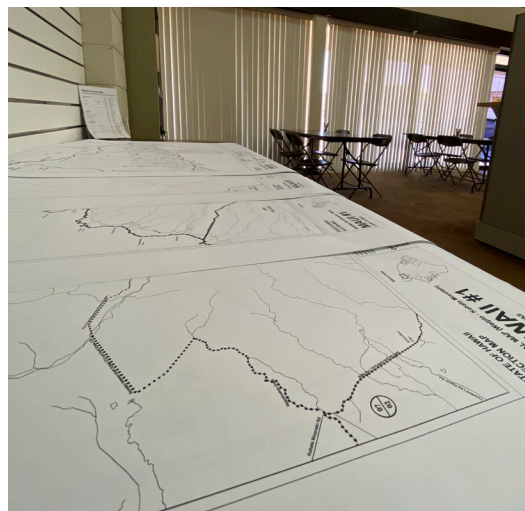
Accessible in-person voting is also available at the voter service centers.

# REAPPORTIONMENT & REDISTRICTING

Reapportionment is the redistribution of seats based on changes in the population that are recorded every 10 years by the U.S. Census Bureau. The Reapportionment Commission reviews the redistribution of the population and draws political districts to ensure each district has roughly the same number of people so they are equally represented.

The state Reapportionment Commission is responsible for drawing the political districts for U.S. Representative, State Senate, and State Representative. There are also Reapportionment Commissions established in the County of Hawaii and City and County of Honolulu which are responsible for drawing the political districts for their respective Councilmembers.

As political district lines may have changed, candidates running for an office with the requirement to be registered in the district must ensure they reside and are properly registered in the district they seek election.



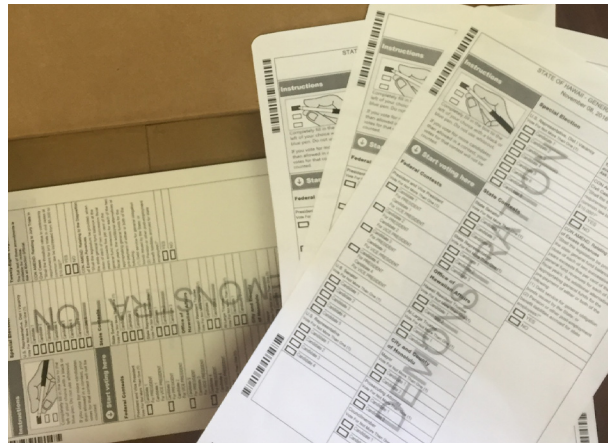
## STATE SENATE STAGGERED ELECTIONS

Since State Senate elections are staggered, the state Reapportionment Commission is responsible for assigning two-year terms for 12 State Senate seats and four-year terms to the other 13 seats. The 12 seats up for election in 2024 will resume the normal four-year term going forward. The terms of office for State Senate will be available at [elections.hawaii.gov](https://elections.hawaii.gov) as the final reapportionment plan must be filed no later than February 27, 2022.

# WHAT'S ON MY BALLOT?

The contests that appear on each voter's ballot is determined by the residence address provided on their voter registration application. The order of offices and candidates on the ballot is determined by state law, Hawaii Revised Statutes §§11-114 and 11-115. For the 2022 Elections, offices are listed in the following order:

- U.S. Senator
- U.S. Representative
- Governor
- Lieutenant Governor
- State Senator
- State Representative
- Office of Hawaiian Affairs
- County Mayor
- County Councilmember
- State Constitutional Amendment Question  
(General Election ballot only)
- County Charter Amendment Question  
(General Election ballot only)



The names of candidates are placed on the ballot under their respective offices in alphabetical order by the candidate's last name except for those cases listed below.

**Candidate Vacancies:** The name of a replacement candidate shall be printed in an available and appropriate place on the ballot, not necessarily in alphabetical order.

**Lieutenant Governor:** In the General Election, the name of the candidate for Lieutenant Governor shall be placed immediately below the name of the candidate for Governor of the same political party. The teams are placed on the ballot in alphabetical order by the last name of the candidate for Governor.

## PRIMARY ELECTION

Hawaii conducts a single-party Primary Election to nominate the candidates who will represent each qualified political party, and nonpartisan candidates, in the General Election. The Primary Election replaces the traditional political party caucuses and conventions in which each political party chooses a slate of candidates to run in the General Election. In the Primary Election, the voters, rather than the parties, choose the candidate who will run for office in the General Election. Also on the ballot are the Office of Hawaiian Affairs (OHA) and county nonpartisan special contests. This encompasses the nonpartisan offices of OHA trustee, county mayor, county prosecuting attorney, and county councilmember.

All political preferences appear on the Primary Election ballot pursuant to the Hawaii State Constitution, Article II, Section 4, which states “Secrecy of voting and choice of political party affiliation or nonpartisanship shall be preserved”. The order political preferences appear on the Primary Election ballot is determined by lot pursuant to Hawaii Revised Statutes §12-21, rather than alphabetically, so that there is an equal chance of a political party being listed first on the ballot. The political preference order includes each qualified political party and nonpartisan.

There is a header indicating each political preference section, as well as headers identifying OHA and county contests. When voting on the Primary Election ballot, voters must first select one political preference, then only vote for candidates within that political preference. Votes for candidates of another political preference are not counted. Everyone may vote for the OHA and county contests, regardless of selected political preference.

## PARTISAN CANDIDATES

Individuals who wish to appear on the ballot as a candidate of a specific political party must belong to a qualified political party in Hawaii. Currently, the Aloha Aina, Constitution, Democratic, Green, Libertarian, and Republican parties are qualified in Hawaii. New political parties have until 4:30 PM on February 24, 2022 to file a petition to qualify for the 2022 Elections. Should additional parties become qualified, a revised list of parties will be available at [elections.hawaii.gov](https://elections.hawaii.gov).

The person(s) receiving the greatest number of votes at the Primary Election as a candidate of a party for an office shall be the candidate of the party in the General Election, but not more candidates for a party than there are offices to be elected (HRS §12-41(a)).

## NONPARTISAN CANDIDATES

Individuals not affiliated with any political party in Hawaii may run as nonpartisan candidates for any partisan office. To qualify for the General Election, nonpartisan candidates must meet one of the following qualifications:

- Receive at least 10% of the votes cast for the office; or
- Receive a vote equal to or greater than the lowest vote received by a partisan candidate who was nominated.

If more nonpartisan candidates qualify to run in the General Election than there are seats available, then the nonpartisan candidate who receives the most votes will appear on the General Election ballot (HRS §12-41(b)).

For a nonpartisan candidate for Governor or Lieutenant Governor to qualify for the General Election, the nonpartisan candidate must have a corresponding nonpartisan running mate on the ballot. If no corresponding running mate qualifies, then the nonpartisan candidate will not be considered qualified and will not appear on the General Election ballot.

Nonpartisan qualification provisions for the General Election do not apply to candidates for OHA and county contests.

## GENERAL ELECTION

The General Election ballot includes the candidates that were nominated in the Primary Election and ballot questions. The General Election ballot does not require the selection of a political party and voters may vote for any candidates across parties. Voters may also vote for the OHA and county contests.

In presidential election years, the candidates for president and vice president appear on the General Election ballot only. The next presidential election will be held in 2024. Some qualified political parties in Hawaii conduct presidential preference polls to determine the state's presidential choice to their national party. The state and national party will determine and submit their presidential nominees to our office to be placed on the General Election ballot. Parties or groups not qualified in Hawaii nominate their candidates for placement

on the General Election ballot through a presidential petition process. To request a presidential petition, contact the Office of Elections, Ballot Operations, at (808) 453-VOTE (8683) or [elections@hawaii.gov](mailto:elections@hawaii.gov).

Constitutional amendment and charter amendment questions also only appear on the General Election ballot. Constitutional amendments are proposed and submitted by the Hawaii State Legislature. There is no initiative process under state law that would allow registered voters or citizen groups to propose and submit questions to amend the Hawaii State Constitution. Charter amendment and initiative questions are submitted by the respective county clerk, consistent with their county laws. State constitutional amendment questions are listed in the order provided by the Hawaii State Legislature. County charter amendment and initiative questions are listed in the order provided by the respective county clerk.

## **NEXT ELECTION, 2024 ELECTION CONTESTS**

The following offices will be up for election in 2024. The State Senate seats will be determined by the Reapportionment Commission pursuant to the Hawaii State Constitution, Article IV, Sections 7 and 8.

- President and Vice President
- U.S. Senator, 1 of 2 seats
- U.S. Representative
- State Senator, 12 of 25 seats
- State Representative
- OHA trustee: Hawaii resident, Molokai resident, Kauai resident, and At-Large
- County of Hawaii: Mayor, Prosecuting Attorney, and Councilmembers
- County of Maui: Councilmembers
- County of Kauai: Prosecuting Attorney and Councilmembers
- City and County of Honolulu: Mayor, Prosecuting Attorney, Councilmember districts I, III, V, VII, IX



# RETURNING THE VOTED BALLOT

Once voters complete their ballot, they may place it in the optional secrecy sleeve before sealing it in the return envelope. The ballot secrecy sleeve ensures the voter's right to secrecy as ballots are prepared for counting. Part of the ballot will stick out from the secrecy sleeve, but the votes are concealed.

After voters place their ballot in the return envelope, they must sign the return envelope. County Election Officials validate return envelopes by matching the voter's signature on the envelope to the signature in their voter registration record.

If voters make a mistake, damage the ballot, or change their mind while voting, they may request a replacement ballot from their County Elections Division. Voting errors cannot be fixed using correction tape or by initialing the error.

When voters are ready to return their ballot, they can simply place it back in the mail as the return envelope is postage-paid and pre-addressed to the County Elections Division. Voters can also return their ballot by hand delivery to a ballot drop box. These secured boxes are located throughout the county and ballots are collected by the County Elections Division.

The voted ballot must be received by the County Elections Division by 7:00 PM on Election Day to be counted. Ballots postmarked by the deadline but received after cannot be counted.

After returning the voted ballot, voters may confirm it was received at [elections.hawaii.gov](https://elections.hawaii.gov) or by calling their County Elections Division.



## SIGNATURE VERIFICATION

Return envelopes are scanned by the County Elections Division upon receipt, validating them by matching the signatures on the outside of the return envelopes to the signatures on file with the voter registration records. If a signature matches, the ballot is counted as “voted.” Ballots validated by the County Elections Division are secured for transfer to the State Office of Elections.

If a signature is missing or does not match, it is reviewed by the County Elections Division and the voter is contacted to remedy the signature. If the signature is corrected within 5 business days following Election Day, the ballot is validated and counted. If it is not corrected, the ballot remains invalid and is not counted.

## TRANSFER OF BALLOTS

Once ballots are validated by County Election Officials, they are secured for transfer to the state counting centers to be opened and counted. There are four counting centers statewide, with one in each county. Ballots are transferred to the counting centers in the presence of Official Observers, who serve as the “eyes and ears” of the public. Official Observers are required by law to be present during the counting of ballots to ensure the security and integrity of the election.



# VOTER SERVICE CENTERS

Voter service centers are established in each county to provide in-person voting and same-day registration. Some voter service centers also provide replacement ballots. Accessible voting equipment is available at these locations for voters.

A voter may only cast one ballot. If a voter has submitted a ballot by mail and then arrives at a voter service center to vote, the voter will not be allowed to vote in person. Likewise, if a voter votes in person at a voter service center, their mail ballot will be canceled. If that mail ballot is received by the County Elections Division, it would not be accepted as the voter registration system would indicate the ballot has been canceled.

## ELECTIONEERING BOUNDARY

Campaign activities for the purpose of soliciting votes for or against any person, political party, or position on a question are prohibited within 200 feet from the perimeter of any voter service center, place of deposit, and its appurtenances. This includes the building in which the voter service center and place of deposit is located, any parking lot adjacent to the building and routinely used for parking at that building, routes of access between the building and any parking lot, and any route of access between any public thoroughfare and the building.

Any person who remains or loiters within the 200 foot electioneering boundary for the purpose of campaigning will be guilty of a misdemeanor. Campaign activities include distribution, circulation, carrying, holding, posting, or staking of campaign cards, pamphlets, posters, and other literature; use of public address system and other public communication media; use of motor caravans, parades, and entertainment troupes; and distribution of goods and services.

## WATCHERS

Each qualified political party is entitled to appoint watchers to observe the conduct of the election at the voter service centers. There may be only one watcher per qualified political party in a voter service center at a time. Watchers must be registered voters in the State of Hawaii. They must not interfere with the activities of any voter or election official. Watchers will be given identification stating their name and the political party they represent. Any violations of election laws observed should be reported to the respective Clerk of the voter service center.

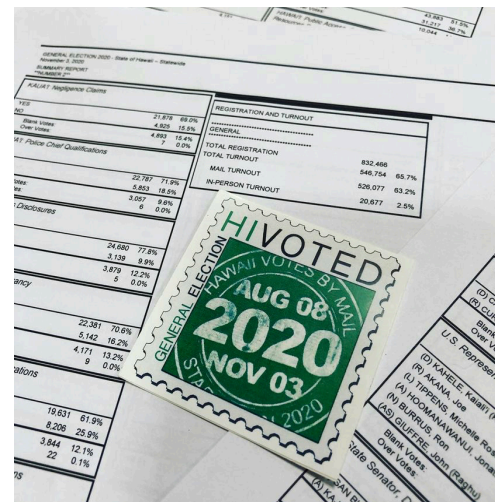
# GETTING RESULTS

At the counting center, ballots are opened, counted, and securely stored beginning no earlier than 18 days before an election. The counting centers are managed by the Office of Elections, with additional support provided by the County Elections Divisions. Volunteers are also recruited to help open and process ballots. Operations within the counting center are monitored by Official Observers who volunteer as the “eyes and ears” of the public.

Ballots are opened in a three-step process to ensure voter secrecy. First, return envelopes are opened and the secrecy sleeve containing the ballot is removed. The empty return envelopes are placed in a separate pile and kept away from the secrecy sleeves. Once all envelopes on the table have been emptied, the envelopes are collected and checked to ensure they are empty. Finally, the ballots are removed from their secrecy sleeves, unfolded, and placed into securable boxes for easy transport. Boxes of voted ballots are brought to the vote counting equipment within the counting center, where they are scanned. Once scanned, boxes are secured maintaining the integrity of the ballot.

## RELEASE OF ELECTION RESULTS

Although ballots are opened and scanned up to 18 days before Election Day, no votes are tabulated until Election Day. The first set of election results are released after the close of voting, 7:00 PM, on Election Day. While this is the earliest results can be released, results cannot be released until all voters in line to vote at 7:00 PM have cast their ballots. Once all voter service centers are closed, results are released by the Office of Elections and posted at [elections.hawaii.gov](https://elections.hawaii.gov).



The first set of results includes mail ballots that were received before Election Day. The second set of results is typically released around 10:00 PM, which includes in-person votes from the voter service centers. The third set of results is released the day after the election. These results include the last mail ballots that had been picked up from the drop boxes or received by mail by the 7:00 PM deadline and were validated later in the evening/early morning. The final set of results is released no earlier than 5 business days after Election Day, after the deadline to correct missing or non-matching signatures.

Results are then certified after the election objection deadline and the resolution of any election challenge. The election objection deadline is the August 26, 2022 for the Primary Election and the November 28, 2022 for the General Election.

## RECOUNTS

An automatic recount is triggered if the difference between 2 candidates – who would qualify to appear on the General Election ballot or would be elected, is 0.25% or 100 votes, whichever is greater (HRS §11-158). State Election Officials determine if any contest requires a recount and schedule the date and time for Official Observers to be present. The results of any recount must be released no later than 72 hours after the close of voting.

State Election Officials will notify the candidates, using the contact information provided at the time of filing, and political parties of the affected contest of the date and time the recount will be conducted.

# DATES & DEADLINES

## *ELECTION DAY*

### **PRIMARY ELECTION**

AUGUST 13, 2022  
.....

Mailed voted ballots must be received by the County Elections Division by 7:00 PM. Voter service centers close at 7:00 PM on Election Day. Any voter in line at that time will be allowed to vote.

### **GENERAL ELECTION**

NOVEMBER 8, 2022  
.....

Mailed voted ballots must be received by the County Elections Division by 7:00 PM. Voter service centers close at 7:00 PM on Election Day. Any voter in line at that time will be allowed to vote.

## *CANDIDATES*

### **CANDIDATE FILING**

MARCH 1, 2022, 7:45 AM  
TO  
JUNE 7, 2022, 4:30 PM  
.....

During candidate filing, individuals can obtain a nomination paper to utilize in collecting signatures from voters eligible to vote for them. Then, submit the completed nomination paper along with a filing fee.

### **DEADLINE TO FILE A NOMINATION PAPER**

JUNE 7, 2022, 4:30 PM  
.....

Candidate filing closes on June 7, 2022, 4:30 PM. Nomination papers will not be accepted after the deadline.

### **WITHDRAWAL FOR ANY REASON**

JUNE 8, 2022, 4:30 PM  
.....

Candidates may submit a request to withdraw their candidacy for any reason to the Office of Elections for federal and state contests or to their County Elections Division for county contests.

### **CANDIDATE OBJECTION**

JUNE 14, 2022, 4:30 PM  
.....

An objection to a candidate's nomination paper may be made by the chief election officer, the clerk for county contests, a registered voter, or an officer of a qualified political party. Registered voters must file their objection with the Office of Elections for federal and state

contests or their County Elections Division for county contests. Objections made by an officer of a political party must be filed directly with the Circuit Court.



## WITHDRAWAL FOR ILL HEALTH

JUNE 24, 2022, 4:30 PM  
.....

Candidates may submit a request to withdraw their candidacy from the Primary Election for reasons of ill health to the Office of Elections for federal and state contests or to their County Elections Division for county contests. Candidates must also provide a statement from a licensed physician or physician assistant indicating that such ill health may endanger the candidate's life.

## AUTOMATIC RECOUNT, IF ANY

AUGUST 16, 2022  
.....

An automatic recount may be triggered if there is a difference of 0.25% or 100 votes, whichever is greater. The recount must be completed within 72 hours of the Primary Election.

## ELECTION OBJECTION

AUGUST 26, 2022  
.....

A candidate, qualified political party, or 30 voters of an election district may file a complaint with the Hawaii Supreme Court. The complaint must present reasons that could cause a difference in the Primary Election results.

## WITHDRAWAL FOR ILL HEALTH

SEPTEMBER 19, 2022,  
4:30 PM  
.....

Candidates may submit a request to withdraw their candidacy from the General Election for reasons of ill health to the Office of Elections for federal and

state contests or to their County Elections Division for county contests. Candidates must also provide a statement from a licensed physician or physician assistant indicating that such ill health may endanger the candidate's life.

## AUTOMATIC RECOUNT, IF ANY

NOVEMBER 11, 2022  
.....

An automatic recount may be triggered if there is a difference of 0.25% or 100 votes, whichever is greater. The recount must be completed within 72 hours of the General Election.

## ELECTION OBJECTION

NOVEMBER 28, 2022  
.....

A candidate, qualified political party, or 30 voters of an election district may file a complaint with the Hawaii Supreme Court. The complaint must present reasons that could cause a difference in the General Election results.



## POLITICAL PARTIES

### QUALIFY A POLITICAL PARTY

FEBRUARY 24, 2022,  
4:30 PM

Parties qualifying for the 2022 Election must obtain 833 signatures of currently registered voters in the State of Hawaii on a petition issued by the Office of Elections. The petition along with the party rules and officers must be submitted to the Office of Elections.

### PARTY RULES FOR QUALIFIED POLITICAL PARTIES

MARCH 16, 2022, 4:30 PM

The Aloha Aina Party, Constitution Party of Hawaii, Democratic Party of Hawaii, Green Party of Hawaii, Libertarian Party of Hawaii, and Hawaii Republican Party must file their party rules with the Office of Elections.

### PARTY OBJECTION

MARCH 24, 2022, 4:30 PM

An objection to a political party petition may be made by the chief election officer or a political party. All objections must be filed with the Office of Elections by 4:30 PM on the 20th business day after the petition has been filed. Therefore, the deadline could be earlier if the political party filed its petition earlier.

### PARTY OFFICERS FOR QUALIFIED POLITICAL PARTIES

MAY 14, 2022, 4:30 PM

The Aloha Aina Party, Constitution Party of Hawaii, Democratic Party of Hawaii, Green Party of Hawaii, Libertarian Party of Hawaii, and Hawaii Republican Party must file their officers with the Office of Elections.

### VOTER SERVICE

#### CENTER WATCHERS

JULY 23, 2022, 4:30 PM

Qualified political parties submit names of voter service center watchers for the Primary Election to the County Elections Divisions.

### VOTER SERVICE

#### CENTER WATCHERS

OCTOBER 19, 2022, 4:30 PM

Qualified political parties submit names of voter service center watchers for the General Election to the County Elections Divisions.

### DISQUALIFICATION

MARCH 8, 2023

The Office of Elections determines if a political party has qualified to field candidates for the 2024 Election based on the results of the 2022 Elections.



# 2024 PRESIDENTIAL

## PRESIDENTIAL

### PETITION

AUGUST 7, 2024, 4:30 PM

Last day for parties or groups not qualified in Hawaii to file presidential petitions with the Office of Elections to appear on the General Election ballot. The petition must have 5,798 signatures of currently registered voters in the State of Hawaii. To obtain a presidential petition, individuals must submit an application and notarized declarations of intent.

## ELECTORAL COLLEGE

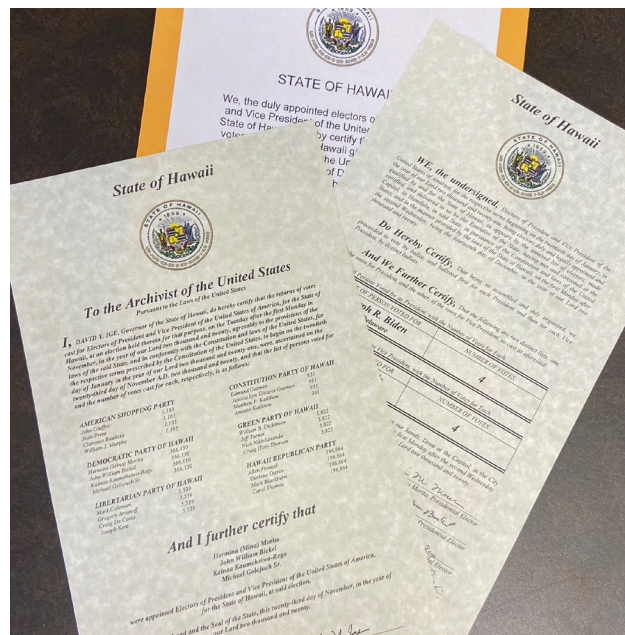
DECEMBER 16, 2024,  
2:00 PM

When voters cast their vote for president and vice president, they are actually casting a vote for the slate of electors who have pledged their support for that same candidate. The Electors, nominated by qualified political parties and presidential candidate petitioners, convene at the Electoral College to elect the next president and vice president.

## CANDIDATES AND ELECTORS

SEPTEMBER 6, 2024,  
4:30 PM

Last day to submit presidential electors for both presidential candidate petitioners and the last day for qualified political parties to certify nominees for president and vice president. All requirements must be filed with the Office of Elections.



## VOTERS

### UOCAVA MAIL BALLOT PACKETS

JUNE 29, 2022  
.....

The County Elections Divisions mail the Primary Election ballots to overseas voters 45 days prior to the election pursuant to the Uniformed and Overseas Citizens Absentee Voting Act (UOCAVA). UOCAVA voters include members of the U.S. Uniformed Services and the merchant marines and their family members, and U.S. citizens residing abroad.



### VOTER SERVICE CENTERS

AUGUST 1, 2022  
.....

Voter service centers are open through Election Day. Services include in-person voting and same-day registration. Voter service centers are operated by the County Elections Divisions. The hours and locations will be published through a joint proclamation in May 2022.

### MAIL BALLOT PACKETS

JULY 26, 2022  
.....

Voters will have received their mail ballot packets for the Primary Election. The mail ballot packet includes the ballot, secrecy sleeve, postage-paid return envelope, and instructions. Voted ballots must be received by the County Elections Division by 7:00 PM on Election Day.

### PLACES OF DEPOSIT

JULY 26, 2022  
.....

Places of deposit may also open as early as the mailing of ballots. Places of deposit are established by the County Elections Divisions as an additional location for voters to drop off their voted ballots. The hours and locations of the places of deposit will be published through a joint proclamation in May 2022.

### VOTER REGISTRATION

AUGUST 3, 2022, 4:30 PM  
.....

Last day to submit a paper Voter Registration Application for the Primary Election. Voters may continue to register using the Online Voter Registration System or at voter service center.

## **REQUEST ABSENTEE BALLOT**

AUGUST 6, 2022, 4:30 PM  
.....

Voters may request an absentee ballot be sent to an alternate mailing address no later than 7 days prior to the election.

## **UOCAVA MAIL BALLOT PACKETS**

SEPTEMBER 23, 2022  
.....

The County Elections Divisions mail the General Election ballots to overseas voters 45 days prior to the election pursuant to the Uniformed and Overseas Citizens Absentee Voting Act (UOCAVA). UOCAVA voters include members of the U.S. Uniformed Services and the merchant marines and their family members, and U.S. citizens residing abroad.

## **MAIL BALLOT PACKETS**

OCTOBER 21, 2022  
.....

Voters will have received their mail ballot packets for the General Election. The mail ballot packet includes the ballot,

secrecy sleeve, postage-paid return envelope, and instructions. Voted ballots must be received by the County Elections Division by 7:00 PM on Election Day.

## **PLACES OF DEPOSIT**

OCTOBER 21, 2022  
.....

Places of deposit may also open as early as the mailing of ballots. Places of deposit are established by the County Elections Divisions as an additional location for voters to drop off their voted ballots. The hours and locations of the places of deposit will be published through a joint proclamation in May 2022.

## **VOTER SERVICE CENTERS**

OCTOBER 25, 2022  
.....

Voter service centers are open through Election Day. Services include in-person voting and same-day registration. Voter service centers are operated by the County Elections Divisions. The hours and locations will be published through a joint proclamation in May 2022.

## **VOTER REGISTRATION**

OCTOBER 31, 2022,  
4:30 PM  
.....

Last day to submit a paper Voter Registration Application for the General Election. Voters may continue to register using the Online Voter Registration System or at voter service center.

## **REQUEST ABSENTEE BALLOT**

NOVEMBER 1, 2022,  
4:30 PM  
.....

Voters may request an absentee ballot be sent to an alternate mailing address no later than 7 days prior to the election.



# BECOMING A CANDIDATE

The candidate filing process allows qualified individuals to have their name appear on the ballot. To become a candidate, (except for the offices of president and vice president), individuals need to apply for a nomination paper to use for collect signatures. The nomination paper must be signed by registered voters in the same district that the candidate is running for. The number of valid signatures is dependent on the office.

For the 2022 Elections, candidates may begin to apply and receive nomination papers on March 1. Completed nomination papers must be filed by June 7, 2022, 4:30 PM, in order to become a candidate and appear on the ballot.

Federal and state offices (excluding the Office of Hawaiian Affairs) are partisan contests. Candidates may be a member of a political party or run as a nonpartisan candidate. The Office of Hawaiian Affairs and County offices are nonpartisan special contests. All candidates for these contests run as nonpartisan candidates.

For presidential and vice-presidential candidates, names are submitted directly to the Office of Elections by the political parties that are qualified in the state. These names are submitted solely for the General Election. The Office of Elections does not conduct presidential Primary Elections. Political parties may be contacted directly to learn more about their processes.

# APPLICATION

To obtain a nomination paper, candidates must first submit an *Application for a Nomination Paper*. Applications are available at **elections.hawaii.gov**, or from one of the locations listed below. Submit your completed application to one of these locations to receive a nomination paper.

- Office of Elections: federal and state elective offices.
- County Elections Division in the Counties of Hawaii, Maui, and Kauai: respective federal, state, and county elective offices.
- City and County of Honolulu Elections Division: City and County of Honolulu elective offices only.

Check **elections.hawaii.gov**, for each location's contact information and hours of operations.

The Office of Elections will issue and accept nomination papers for all federal and state elective offices, including the Office of Hawaiian Affairs (OHA). Nomination papers for county offices are only available from the respective County Elections Division. The Counties of Hawaii, Maui, and Kauai will also issue and accept their respective federal and state elective offices.

It is strongly recommended that first time candidates pick up their nomination paper in person. The election official issuing the nomination paper will explain the process and answer any questions the candidate may have.

## CANDIDATE SYSTEM FOR ONLINE ISSUING OF NOMINATION PAPERS

Candidates may also obtain a nomination paper online through the Candidate System. The system can be accessed through the Office of Elections' website at **elections.hawaii.gov**. Candidates will complete an online application that will be used to generate a nomination paper that can be printed to use for collecting signatures. The system does not guarantee candidacy. Candidates will still need to submit the completed hard copy of their nomination paper to their elections office by the candidate filing deadline, 4:30 PM on June 7, 2022.

**APPLICATION FOR A NOMINATION PAPER**

**Application for a Nomination Paper**

State of Hawaii | 2022 Elections

Please print clearly in black ink.

This information contained on this form will be released to the public with the exception of HI Driver License or HI State ID Number, Social Security Number, Date of Birth, and Residence Address Number. If no Mailing Address is provided Residence Address will be released to the public.

<b>1</b>	Last Name	First Name	Middle or Initial(s)	Suffix (Jr., III)
----------	-----------	------------	----------------------	-------------------

<b>2</b>	Name Commonly Known As (if different from legal name)
----------	---

<b>3</b>	HI Driver License or HI State ID Number	If you do not have a HI Driver License or HI State ID, provide the last 4-digits of your Social Security Number	<input type="text"/> <input type="text"/> <input type="text"/> <input type="text"/>	Date of Birth
----------	---	---	---	---------------

<b>4</b>	Residence Address	City	Zip Code
----------	-------------------	------	----------

<b>4</b>	Mailing Address	City	Zip Code
----------	-----------------	------	----------

If your residence does not have a street address, describe the location (cross streets, landmarks).

<b>5</b>	Phone Number	Email Address	Website
----------	--------------	---------------	---------

<b>6</b>	Contact Person	Relation of Contact Person	Contact Person's Phone Number
----------	----------------	----------------------------	-------------------------------

<b>7</b>	Felony Conviction <input type="checkbox"/> Yes <input type="checkbox"/> No	I am a citizen of the United States of America. <input type="checkbox"/> Yes <input type="checkbox"/> No	
		I am a resident of the State of Hawaii. <input type="checkbox"/> Yes <input type="checkbox"/> No	
		I am a registered voter of the State of Hawaii. <input type="checkbox"/> Yes <input type="checkbox"/> No	

<b>8</b>	Office and District (Example: State Representative District 1, OHAAt-Large Trustee State of Hawaii, Hawaii Mayor County of Hawaii)
----------	--

<b>8</b>	Political Party or Nonpartisan	Party Member <input type="checkbox"/> Yes <input type="checkbox"/> No
----------	--------------------------------	--

<b>9</b>	The information provided herein is true and correct and I hereby authorize the Chief Election Officer and/or the County Clerk to verify the above information.
Signature	Date

<b>OFFICE USE ONLY</b>	Issued By	Date & Time	Location	CJIS Verified <input type="checkbox"/> Felony <input type="checkbox"/> No Felony	Registration Verified Cong.   Senate   House   Council	Proofed in System Initials:
	Filed By	Date & Time	Location	CSC Affidavit Filed <input type="checkbox"/> Yes <input type="checkbox"/> No	Filing Fee Amount	Receipt Number

Ballot Name - maximum of 27 typed spaces; including letters, spaces, and punctuation marks. May include a nickname or Hawaiian equivalent in parenthesis. Titles and slogans are not allowed. Use this format: LASTNAME, Firstname M.I., Jr. (Nickname)

--

Comments
----------

Rev. 2/16/21

# NOMINATION PAPER

Candidates may apply for more than 1 nomination paper if they have not decided which office or party to run for. However, candidates may not file a nomination paper for more than 1 office or for more than 1 party; nor shall any person file a nomination paper both as a party candidate and as a nonpartisan candidate (HRS §12-3). Candidates are advised to file their nomination paper early and to allow ample time to comply with all requirements.

<p><b>Nomination Paper</b></p> <p>提名紙   Papel iti Panakadutok</p>	<p>Candidate Filing Deadline   <b>Tuesday, June 7, 2022 at 4:30pm</b></p>						
<p><b>Candidate Information</b></p> <p>Legal Name (First Middle Last)</p> <hr/> <p>Name Commonly Known As (First Middle Last)</p> <hr/> <p>Residence Address</p> <hr/> <table style="width: 100%; border-collapse: collapse;"> <tr> <td style="width: 33%; border-bottom: 1px solid black;">City</td> <td style="width: 33%; border-bottom: 1px solid black;">Zip Code</td> <td style="width: 33%; border-bottom: 1px solid black;">County</td> </tr> </table> <p>Mailing Address</p> <hr/> <table style="width: 100%; border-collapse: collapse;"> <tr> <td style="width: 33%; border-bottom: 1px solid black;">City</td> <td style="width: 33%; border-bottom: 1px solid black;">Zip Code</td> <td style="width: 33%;"></td> </tr> </table>	City	Zip Code	County	City	Zip Code		<p>We, by signature hereon, nominate the person named as a candidate on the ballot to be voted on at the next Primary or Special Election and we declare that we are duly registered voters and that we are eligible to vote for the candidate. We understand that we may sign nomination papers for only one candidate for a particular elective office if there is only one seat available. If more than one seat is available for election, then we may sign as many nomination papers as there are available seats.</p> <p>我們，謹於此簽名，提名以上名字的人作為在下屆初級或特殊選舉的候選人，並且聲明我們是已正式登記的選民，及合乎資格投票選舉候選人。我們明白，如果只有一個席位，我們只可以簽署一名候選人的提名文件。如果有一個以上的席位參選，那麼我們可以簽署多個提名文件。</p> <p>Dakami, babaen ti panagpirmami ditoy, dutokanmi ti tao a nainaganan iti ngato a kas papili iti balota a mabotosan inton sumaruno a Panagpipili Primaria wenna Naisangayan a Panagpipili ken ipaneknekami a nainkalintegang ti panakailista dagiti naganmi iti listaan dagiti mabalin nga agpili iti sumaruno a panagpipili. Maawatanni a mabalinmi iti agpirma iti papel a mangdutok iti maysa laeng a papili nga agpaay iti maitutop a pagtakeman no maymaysa laeng iti takem a kasapulán. No nasursurok ngem maysa iti takem a kasapulán iti panagpipili, iti kasta mabalinmi iti agpirma kadagiti papeles a pangdutok a kas iti bilang dagiti pagtakeman a kasapulán.</p>
City	Zip Code	County					
City	Zip Code						
<p><b>Contest Information</b></p> <p>Office and District</p> <hr/> <p>Political Party or Nonpartisan</p> <hr/>							
<p><b>Signatures Required</b></p> <hr/>							
<p>Issued by &amp; Date: _____</p> <p>Note: Pursuant to HRS §12-3, a nomination paper that is incomplete and/or a nomination paper that has been altered by anyone other than the chief election officer or the city/county clerk will not be accepted. Pursuant to HRS Chapter 19, any person who knowingly takes an oath on the nomination paper and willfully makes a false statement of fact while under oath therein may be guilty of voter fraud which is a Class C felony, punishable by up to five years imprisonment and a \$10,000 fine.</p>							
Rev. 4/12/21	Page 1						



## CHANGES TO NOMINATION PAPER

A new nomination paper is required if the candidate desires to change their name, the office or district sought, or party affiliation. The candidate filing deadline remains unchanged.

## INCOMPLETE OR ALTERED NOMINATION PAPER

A nomination paper which is incomplete (does not contain all the required certifications, signatures, and requirements of Hawaii Revised Statutes §12-3), or contains alterations or changes made by anyone other than the chief election officer or clerk shall be void and will not be accepted for filing.

## LOST NOMINATION PAPER

Candidates who lose their nomination paper should contact the office of issuance for a replacement set. Candidates who obtained their nomination paper through the online Candidate System may obtain a replacement set through the system. Candidates are responsible for acquiring the required number of signatures on the reissued nomination paper. Filing requirements and deadlines remain unchanged.

## CANDIDATE'S BALLOT NAME

Each candidate must designate the name that they want to appear on the ballot. The ballot name will be placed on the nomination paper and must be finalized at the time of filing.

Each candidate is allowed a maximum of 27 characters on the ballot for their name including all letters, blank spaces, and punctuation marks. The ballot name may include a nickname or Hawaiian equivalent in parentheses. Titles and slogans are not permitted as part of the candidate's ballot name.

All candidates' names will be in the format prescribed by the Office of Elections to ensure consistency and equality. The chief election officer is authorized to conform all names printed on the ballot to the format prescribed in the Hawaii Administrative Rules.

Ballot Name Format:

LASTNAME, Firstname M.I., Jr. (Nickname)

Candidates verify and confirm the correct spelling of their ballot name at the time of filing. Once the nomination paper is filed, the candidate's designated ballot name cannot be altered except for changes made by the Office of Elections to ensure consistency and equality.

## SIGNATURE REQUIREMENTS

Prior to being filed, the nomination paper must be signed by a minimum number of properly registered voters who are qualified to vote for the candidate. Candidates are responsible for ensuring there are sufficient signatures of qualified voters on their nomination paper based on the office sought. To be valid, each signatory must:

- Include name, signature, residence address, and month and day of birth for verification.
- Be registered to vote in the district from which the candidate seeks election.
- Sign a nomination paper for only 1 candidate for a specific elective office if there is only 1 seat available. However, if more than 1 seat is available for election, a signatory may sign as many nomination papers as there are available seats.

Mailing address will not be accepted in place of a residence address. Voter registration affidavits that have not been entered in the statewide voter registration system can not be used to validate a signature.

Signatures will be verified at the time of filing. Candidates are advised to obtain more signatures than is required in anticipation of invalid or unqualified signatories. Examples of invalid or unqualified signatories are individuals who are not registered or the information provided on the nomination paper does not match the information in the voter registration system. Once the nomination paper is filed, candidates will not be allowed to add more signatures.

## WITHDRAWAL OF SIGNATURES

A voter may withdraw their signature from a candidate's nomination paper by providing written notice to the chief election officer or clerk, in the case of a county office, at any time before the candidate's nomination paper is filed. The written notice must include the voter's name, residence address, month and day of birth, the voter's signature, the name of the candidate, and a statement that the voter wishes to remove their signature from the candidate's nomination paper. State law also requires that the notice of withdrawal must be received by the chief election officer or clerk no later than 4:30 PM on the fourth business day prior to the close of filing. Any request received after the candidate's nomination paper is filed or after the fourth business day prior to the close of filing will not be accepted.



# FILING YOUR NOMINATION PAPER

State law prohibits exceptions or extensions to the filing deadline. Additionally, candidates are encouraged to file their nomination paper at the office of issuance. For those candidates who obtained their nomination paper online through the Candidate System, they may file their nomination paper at a location listed below:

- Office of Elections: federal and state elective offices.
- County Elections Division in the Counties of Hawaii, Maui, and Kauai: respective federal, state, and county elective offices.
- City and County of Honolulu Elections Division: City and County of Honolulu elective offices only.

Check [elections.hawaii.gov](https://elections.hawaii.gov), for each location's contact information and hours of operations.

## MEDIA COVERAGE

Candidates who have secured media coverage are advised to coordinate with the office of filing prior to sending a press release. This is to ensure the candidate's nomination paper is in order prior to filing and adequate accommodations are set. In addition, some offices may not be able to accommodate media coverage due to any COVID-19 guidelines in place at that time.

## FILING FEE

The filing fee must be paid by cash, cashier's check, certified check, or money order at the time of filing. Personal or campaign checks are not accepted. Candidates running for federal or state office and who file

their nomination paper with the County of Hawaii, Maui, or Kauai are encouraged to pay the filing fee by cashier's check, certified check, or money order. The filing fee varies depending on the office sought and is nonrefundable.

## DISCOUNTED FILING FEE

Candidates for state and county offices who agree to abide by the state's voluntary campaign expenditure limits may receive a discounted filing fee by submitting an *Affidavit to Voluntarily Agree with Campaign Expenditure Limits* to the Campaign Spending Commission prior to filing their nomination paper with the chief election officer or clerk. To receive the discounted filing fee, the candidate must provide the chief election officer or clerk with a notarized filed copy of the affidavit at the time of filing.

A candidate who agrees to the expenditure limit, but subsequently exceeds the expenditure limit must pay the balance of the full filing fee and notify all opponents, the Office of Elections, and the Campaign Spending Commission by telephone and in writing the day the expenditure limits are exceeded. The candidate must also notify all contributors, within 30 days of exceeding the limit, that the expenditure limit was exceeded (HRS §11-426).

Contact the Campaign Spending Commission for more information about campaign expenditure limits.

### **Campaign Spending Commission**

Leiopapa A Kamehameha Building  
235 S. Beretania Street, Room 300  
Honolulu, HI 96813  
(808) 586-0285  
[www.hawaii.gov/campaign](http://www.hawaii.gov/campaign)

## CANDIDATES WHO ARE INDIGENT

Candidates who declare themselves indigent via an affidavit may have the filing fee waived. The affidavit must be accompanied by a petition signed by registered voters who constitute one-half of one percent (0.5%) of the total voters registered at the last preceding General Election in the district from which the indigent person seeks election. Indigent candidates must file a nomination paper and comply with other filing requirements.

## CERTIFICATIONS BY CANDIDATES

All the certifications on the nomination paper, except for the Oath of Loyalty/Affirmation, must be certified by each candidate by self-subscribing oath. Pursuant to Hawaii Revised Statutes §19-3.5, any person who knowingly takes an oath prescribed or authorized by law and willfully makes any false statement of fact while under oath therein shall be guilty of voter fraud, which is a Class C felony punishable by up to 5 years imprisonment and/or a \$10,000 fine.

For state and county offices, under the Uniform Act on Status of Convicted Persons a person sentenced for a felony may not become a candidate for or hold public office from the time of the person's sentence until the person's final discharge (HRS §831-2). An individual who has been sentenced for a felony must receive and present their final discharge papers before they are eligible to file a nomination paper. There is no requirement for federal offices.

## PARTISAN CANDIDATES

Candidates who are not members of a political party may be challenged and disqualified on that basis.

## RESIGNATION FROM OFFICE

Elected state or county public officials must resign from the office currently held before being eligible as a candidate for another state or county elective office. This applies only if the term presently held is not normally scheduled for election in the same year as the office sought. The candidate must resign from the office currently held before filing the nomination paper (Hawaii State Constitution, Article II, Section 7).

## OATH OF LOYALTY OR AFFIRMATION

Each candidate must take and subscribe to a prescribed written Oath of Loyalty or Affirmation before a notary public or a public officer authorized by law to administer oaths. The Oath of Loyalty or Affirmation may be completed before filing; or at the time of filing, depending on location. Check with the location before filing, as to whether a notary public or public officer authorized by law to administer oaths will be available.

Candidates should be prepared to provide a current identification containing the person’s picture and signature (e.g., driver license or state ID) when the Oath of Loyalty or Affirmation is subscribed to before a notary public.

**NOMINATION PAPER | CERTIFICATION PAGE**

**Candidate Certification**

I, \_\_\_\_\_, the candidate named herein, hereby certify by self-subscribing oath that:

1. I will qualify under the law for the office which I am seeking;
2. I have determined that all of the information on my nomination paper is true and correct, except for that information provided by the voters who signed my nomination paper; and
3. I am in compliance with HRS Section 831-2, dealing with felons, to the extent applicable.

Signature: \_\_\_\_\_ Date: \_\_\_\_\_

**Partisan Candidate Certification**

I, \_\_\_\_\_, the candidate named herein, further certify by self-subscribing oath that I am a member of the \_\_\_\_\_.

Signature: \_\_\_\_\_ Date: \_\_\_\_\_

**County Candidate Certification**

I, \_\_\_\_\_, the county candidate named herein, further certify by self-subscribing oath that I have complied with the relevant provisions of the applicable county charter and county ordinances pertaining to elected officials.

Signature: \_\_\_\_\_ Date: \_\_\_\_\_

**Resignation Certification**

I, \_\_\_\_\_, the candidate named herein, further certify by self-subscribing oath that I have complied with Article II, Section 7, of the Constitution of the State of Hawaii, Resignation from Public Office, and qualify under the law to be a candidate for another State or County office.

Signature: \_\_\_\_\_ Date: \_\_\_\_\_

**Complete Oath of Loyalty OR Affirmation**

**Oath of Loyalty**

I, \_\_\_\_\_, do solemnly swear and declare, on oath that if elected to office I will support and defend the Constitution and laws of the United States of America, and the Constitution and laws of the State of Hawaii, and will bear true faith and allegiance to the same; that if elected I will faithfully discharge my duties as \_\_\_\_\_ to the best of my ability; that I take this obligation freely, without any mental reservation or purpose of evasion; So help me God.

Signature: \_\_\_\_\_ Date: \_\_\_\_\_

**Affirmation**

I, \_\_\_\_\_, do solemnly, sincerely, and truly affirm and declare, that if elected to office I will support and defend the Constitution and laws of the United States of America, and the Constitution and laws of the State of Hawaii, and will bear true faith and allegiance to the same; that if elected I will faithfully discharge my duties as \_\_\_\_\_ to the best of my ability; that I take this obligation freely, without any mental reservation or purpose of evasion.

Signature: \_\_\_\_\_ Date: \_\_\_\_\_

This \_\_\_\_\_ page "Nomination Paper," dated \_\_\_\_\_, was subscribed and sworn to before me this \_\_\_\_\_ day of \_\_\_\_\_, 20 \_\_\_\_\_, in the \_\_\_\_\_ Circuit of the State of Hawaii.

Signature of Notary Public, State of Hawaii

Printed Name of Notary Public: \_\_\_\_\_

My commission expires: \_\_\_\_\_

or By \_\_\_\_\_

Clerk or Public Officer authorized to administer oaths.

<b>Office Use Only</b>	Issued By: _____	Date & Time: _____	Location: _____	Filed By: _____	Date & Time: _____	Location: _____
	Ballot Name (LAST, First M.I., Jr. (Nickname)) _____					Total Valid Signatures: _____

## AUDIO BALLOT

The Help America Vote Act of 2002 requires an audio version of the ballot for individuals with disabilities. Upon filing the nomination paper, the candidate will be asked to record their ballot name. This recording will be used to assist the production of the audio ballot ensuring the correct pronunciation of the ballot name. It will not be the actual recording used for the audio ballot.



## OBJECTION TO A CANDIDATE'S NOMINATION PAPER

An objection to a candidate's nomination paper may be made by the chief election officer, the clerk for county contests, a registered voter, or an officer of a qualified political party. All objections must be submitted in writing and received not later than 4:30 PM on June 14, 2022.

An objection by a registered voter is made to the chief election officer or clerk in the case of county contests, who will reach a preliminary determination on the objection as to whether it may warrant disqualification. If the preliminary determination is that the objection may warrant disqualification, then the chief election officer or clerk in the case of county contests, will file a complaint in the circuit court for a determination of the objection.

An objection by an officer of a qualified party is filed by that officer in the circuit court for a determination of the objection.

Candidates will be notified of any challenge by registered or certified mail. Refer to Hawaii Revised Statutes §12-8 for more specific information on challenges, evidentiary hearings, and decisions.



## WITHDRAWAL OF CANDIDATES

Candidates who have filed a nomination paper may withdraw their candidacy for any reason by 4:30 PM on June 8, 2022. After this date candidates may only withdraw for reasons of ill health by 4:30 PM on June 24, 2022 for the Primary Election or by 4:30 PM on September 19, 2022 for the General Election.

To withdraw, the candidate must submit a written notice to the chief election officer for a candidate seeking federal or state office, or the appropriate clerk for a candidate seeking county office. Candidates who withdraw for reasons of ill health must also provide a statement from a licensed physician or physician assistant indicating that such ill health may endanger the candidate's life.

# FREQUENTLY ASKED QUESTIONS

## RECEIVING AND FILING A NOMINATION PAPER

DO I HAVE TO PICK UP MY  
NOMINATION PAPER IN PERSON?

No, you may authorize someone to pick up your nomination paper. The authorized person must be able to provide specific information about you such as, legal name, date of birth, driver license or social security number, residence and mailing address, telephone numbers, and a contact person's name and phone number.

Once a nomination paper is issued, no alterations or changes will be made. If the information is incorrect, the nomination paper will not be accepted for filing.

You may also obtain a nomination paper online through the Candidate System. The system can be accessed through the Office of Elections' website at [elections.hawaii.gov](http://elections.hawaii.gov).

WHY SHOULD I PICK UP MY  
NOMINATION PAPER IN PERSON?

If you are a first time candidate, we strongly recommend that you pick up your nomination paper in person. When picking up a nomination paper, the election official issuing the paper will explain the filing process and answer any questions you may have. As the candidate, you are responsible for complying with the filing requirements and understanding the applicable laws regardless of who picks up the nomination paper or if you obtained it through the online Candidate System.

CAN SOMEONE OTHER THAN  
MYSELF FILE MY NOMINATION  
PAPER OR CAN I MAIL IT IN?

Our laws do not prohibit you from having another person file your nomination paper or from filing through the mail. However, we strongly recommend that you file your nomination paper in person to ensure that you fulfill all of the requirements. Nomination papers submitted by mail must be received by the candidate filing deadline, not postmarked.

You are required to sign many documents in the nomination process. If any document is incomplete, the problem can be easily rectified when you file in person.

## CAN I FILE MY NOMINATION PAPER ONLINE THROUGH THE CANDIDATE SYSTEM?

No, the online Candidate System is only used to issue and print a nomination paper for collecting signatures. As the completed nomination paper must include original wet signatures and notarization; you must file a completed hard copy of your nomination paper to your elections office by the candidate filing deadline.

## WHAT DO I NEED WHEN I COME IN TO FILE MY NOMINATION PAPER?

You will need the following items when you come in to file your nomination paper:

- Your original nomination paper containing at least the minimum signatures required;
- Your filing fee in the form of cash, cashier's check, certified check, or money order (candidates for federal or state office filing in the Counties of Hawaii, Maui, or Kauai are encouraged to pay by cashier's check, certified check, or money order). Personal or

campaign checks will not be accepted;

- A notarized filed copy of the *Affidavit to Voluntarily Agree with Campaign Expenditure Limits* from the Campaign Spending Commission if you wish to qualify for the discounted filing fee; and
- A current identification containing your picture and signature (such as driver license or State ID) for the Oath of Loyalty/Affirmation. Check with the location before filing, as to whether a notary public or public officer authorized by law to administer oaths will be available.

## CHANGES TO MY INFORMATION AND NOMINATION PAPER

### WHAT SHOULD I DO IF I DECIDE TO RUN FOR A DIFFERENT OFFICE OR UNDER A DIFFERENT POLITICAL PARTY?

If you wish to make a change to your name, office, or party you must obtain a new nomination paper. Do not alter any information on your nomination paper. A nomination paper that has been altered in any way will not be accepted for filing.

## WHAT IF I CHANGE MY RESIDENCE ADDRESS AFTER I FILE MY NOMINATION PAPER?

Once you file you may not alter your nomination paper in any way. This includes changing the residence address listed on your nomination paper. Although we will not make a change directly on the nomination paper, we will attach your written notification of your change of address to your nomination paper. You must still meet the qualifications for the office you are seeking.

## WHAT SHOULD I DO IF I LOSE MY NOMINATION PAPER?

If you lose your nomination paper, contact the office of issuance or reprint your nomination paper from the online Candidate System. You must still acquire the required signatures and meet the filing deadline and requirements.

# SIGNATURES

## WHAT HAPPENS IF SOME OF THE PEOPLE WHO SIGN MY NOMINATION PAPER ARE NOT REGISTERED VOTERS, OR DO NOT

## LIVE WITHIN THE DISTRICT I SEEK TO REPRESENT?

Signatures of persons who are not properly registered to vote or who do not reside in the correct district will not be counted. The Office of Elections, or the County Elections Division, will verify that the people who sign your nomination paper are properly registered and eligible to sign your nomination paper before you file the nomination paper.

We strongly recommend that you obtain more signatures than required and file your nomination paper early to avoid the consequence of insufficient signatures. If you wait until the last day to file your nomination paper and the number of signatures, for any reason, is insufficient, you may not qualify to be a candidate. If you file early, and the number of valid signatures on your nomination paper is insufficient, you will have an opportunity to obtain additional signatures before the deadline.

## WHAT HAPPENS IF MY NOMINATION PAPER DOES NOT HAVE THE REQUIRED NUMBER OF SIGNATURES OR IS INCOMPLETE IN ANY WAY?

State law prohibits the chief election officer or clerk from accepting or filing any nomination paper that is incomplete or does not have the required number of valid signatures.

## MAY I ADD ADDITIONAL SIGNATURES TO MY NOMINATION PAPER AFTER I FILE THEM?

No, once the nomination paper is filed you will not be allowed to alter it in any way. This includes adding additional signatures to your nomination paper. You are responsible for ensuring that the people who sign your nomination paper are qualified voters and reside in the correct district before they sign your nomination paper. Make sure your nomination paper contains at least the required number of signatures of qualified voters in the district before you file.

## BALLOT NAME

### MAY I CHANGE THE WAY MY NAME WILL APPEAR ON THE BALLOT AFTER I FILE MY NOMINATION PAPER?

No, once the nomination paper is filed you will not be allowed to alter it in any way. This includes changing the way your name will appear on the ballot as designated on your nomination paper. Make sure your name is spelled correctly before you file your nomination paper.

### IN WHAT ORDER WILL CANDIDATE NAMES APPEAR ON THE BALLOT?

State law requires that the names of the candidates shall be placed upon the ballot for their respective offices in alphabetical order by the candidate's last name except for those cases listed below.

**Candidate Vacancies:** The name of the replacement candidates shall be printed in an available and appropriate place on the ballot, not necessarily in alphabetical order.

**Vice President or Lieutenant Governor:** In the General Election, the name of the candidate for Vice President or Lieutenant Governor shall be placed immediately below the name of the candidate for President or Governor, respectively, of the same political party. The teams are placed on the ballot in alphabetical order by the last name of the candidate for President or Governor, respectively.

## POLITICAL PARTY AND NONPARTISAN

IF I AM RUNNING AS A PARTISAN CANDIDATE, BY WHAT DATE DO I HAVE TO BE A MEMBER OF THE POLITICAL PARTY?

You must be a member of the political party from which you seek office before you file your nomination paper. Our state law requires that you sign a certification, by self-subscribing oath, which states that you are a member of the specific party when you file your nomination paper. If you are not a member of the party when you file your nomination paper, you may be disqualified on that basis.

IF I RUN AS A NONPARTISAN CANDIDATE FOR A PARTISAN OFFICE, WILL I AUTOMATICALLY GO ON THE GENERAL ELECTION BALLOT IF I WIN MY PRIMARY?

No, nonpartisan candidates who seek a partisan office must qualify to appear on the General Election ballot. To qualify, a nonpartisan candidate must:

- Receive at least 10% of the votes cast for the office; or

- Receive a vote equal to or greater than the lowest vote received by a partisan candidate who was nominated.

If more nonpartisan candidates qualify to run in the General Election than there are seats available, then the nonpartisan candidate who receives the most votes will appear on the General Election ballot.

The nonpartisan qualification provisions listed above do not apply to candidates for Office of Hawaiian Affairs (OHA), County of Hawaii, County of Maui, County of Kauai, or City and County of Honolulu.

## CAMPAIGNING

HOW CAN I GET A LIST OF CANDIDATES?

Lists of applicants and candidates are updated and available every Friday after close of business during the candidate filing period at **[elections.hawaii.gov](https://elections.hawaii.gov)**.

The list is also available at the Office of Elections and County Elections Division. These lists will not be mailed or faxed by any of the offices.

## WHERE CAN I GET PREPRINTED LABELS?

Preprinted mailing labels may be obtained for a fee from various service bureaus. The preprinted mailing labels may be obtained and used for election purposes only. Contact the County Elections Division to request the voter registration data.

## WITHDRAWAL AND RESIGNATION

### WHAT DO I HAVE TO DO IF I CHANGE MY MIND ABOUT BEING A CANDIDATE AFTER FILING MY NOMINATION PAPER?

After filing your nomination paper, you must officially withdraw from the election by submitting a request to withdraw to the chief election officer, or to the clerk in the case of county offices, by the withdrawal deadlines.

You may withdraw for any reason up to 4:30 PM on the day immediately following the close of filing, June 8, 2022. After this deadline, you have until the fiftieth day prior to the election to withdraw for reasons of ill health only. Requests to withdraw for reasons of ill health must be accompanied by a statement from a licensed physician or physician

assistant indicating that such ill health may endanger your life. You may withdraw for reasons of ill health by 4:30 PM on June 24, 2022 for the Primary Election or by 4:30 PM on September 19, 2022 for the General Election.

### WHEN AND WHY MUST AN ELECTED OFFICIAL RESIGN FROM PUBLIC OFFICE?

A State or County elected official must resign from public office if they are seeking another State or County elective office; and the elected official's current term does not end in the same year as the office sought. The resignation requirements apply only to State and County offices. The candidate must resign from the office currently held before filing their nomination paper.

### WHAT DO I HAVE TO DO IF I WANT TO RUN FOR A DIFFERENT OFFICE AFTER FILING MY NOMINATION PAPER?

You may obtain a nomination paper for the new office and collect new signatures. However, before you file your nomination paper for the new office, you must withdraw your nomination paper for the previous office. The filing fee is nonrefundable. You must meet the requirements for the new office. Deadlines remain unchanged.





# 2022 ELECTION CONTESTS

## FEDERAL OFFICE

### U.S. SENATOR

Candidates for federal legislative office who are nominated in the Primary Election and are unopposed in the General Election will be deemed elected to the office sought after the Primary Election regardless of the number of votes received by that candidate (Hawaii State Constitution, Article III, Section 4) (HRS §11-99).

#### SEATS AVAILABLE AND DISTRICTS

1 of 2, State of Hawaii

#### TERM

6 years, January 2023 to January 2029

#### QUALIFICATIONS

- United States citizen for 9 years
- Inhabitant of Hawaii when elected
- At least 30 years of age

#### SIGNATURE REQUIREMENT

25 registered voters of the State of Hawaii

#### FILING FEE

\$75

Cashier's checks, certified checks, and money orders should be made payable to Office of Elections.

## U.S. REPRESENTATIVE

Candidates for federal legislative office who are nominated in the Primary Election and are unopposed in the General Election will be deemed elected to the office sought after the Primary Election regardless of the number of votes received by that candidate (Hawaii State Constitution, Article III, Section 4) (HRS §11-99).

### SEATS AVAILABLE AND DISTRICTS

2 of 2, Congressional I and II

### TERM

2 years, January 2023 to January 2025

### QUALIFICATIONS

- United States citizen for 7 years
- Inhabitant of Hawaii when elected
- At least 25 years of age

### SIGNATURE REQUIREMENT

25 registered voters of the State of Hawaii

### FILING FEE

\$75

Cashier's checks, certified checks, and money orders should be made payable to Office of Elections.



## OTHER AGENCIES AND REQUIREMENTS

### FEDERAL ELECTION COMMISSION

Individuals running for federal office will become a candidate when they raise or spend more than \$5,000 in contributions or expenditures. Federal candidates must designate a principal campaign committee. This campaign committee takes in contributions and makes expenditures for the candidate's campaign. Contact the FEC for information and to complete the forms.

#### **Federal Election Commission**

1050 First Street, NE  
Washington, DC 20463  
(800) 424-9530  
info@fec.gov  
www.fec.gov

### COMMITTEE ON ETHICS

Ethics rules require federal candidates to disclose financial information. Candidates for U.S. Senate should contact the Senate Select Committee on Ethics. Candidates for U.S. Representative should contact the House Committee on Ethics.

#### **Senate Select Committee on Ethics**

220 Hart Building  
United States Senate  
Washington, DC 20510  
(202) 224-2981  
www.ethics.senate.gov

#### **House Committee on Ethics**

1015 Longworth House Office Building  
Washington, DC 20515  
(202) 225-7103  
ethics.house.gov

### THE HATCH ACT

A federal law passed in 1939, limits certain political activities of federal employees, as well as some state, D.C., and local government employees who work in connection with federally funded programs. The law's purposes are to ensure that federal programs are administered in a nonpartisan fashion, to protect federal employees from political coercion in the workplace, and to ensure that federal employees are advanced based on merit and not based on political affiliation. If you are unsure about your employee status, check with your employer regarding your eligibility and contact the U.S. Office of Special Counsel, Federal Hatch Act Unit.

#### **U.S. Office of Special Counsel**

1730 M Street, NW, Suite 218  
Washington, DC 20036  
(800) 854-2824  
hatchact@osc.gov  
www.osc.gov

# STATE OFFICE

## GOVERNOR AND LIEUTENANT GOVERNOR

In the Primary Election, Governor and Lieutenant Governor are each a separate contest. However, in the General Election, Governor and Lieutenant Governor are voted for as a team by political party or as a team by nonpartisan. As such, at no time may someone appear as a candidate for Governor or Lieutenant Governor on the Primary or General Election ballot if there is no running mate on the ballot.

Given this, at the close of candidate filing, if there is no candidate for Governor or Lieutenant Governor of the same political party or nonpartisan, then the nomination paper for the prospective candidate will be void and the candidate will not appear on the Primary Election ballot.

Following the Primary Election, a nonpartisan candidate who would otherwise qualify as a candidate for Governor or Lieutenant Governor on the General Election ballot, will not qualify unless there is a running mate in the form of a nonpartisan candidate for Governor or Lieutenant Governor, who has otherwise met the nonpartisan qualification provisions to appear on the General Election ballot (Hawaii State Constitution, Article V, Sections 1 and 2).

### SEATS AVAILABLE AND DISTRICTS

---

1 per office, State of Hawaii

### TERM

---

4 years, December 2022 to December 2026

### QUALIFICATIONS

---

- Resident of Hawaii for not less than 5 years immediately preceding the election
- Registered voter of Hawaii
- At least 30 years of age

### SIGNATURE REQUIREMENT

---

25 registered voters of the State of Hawaii

### FILING FEE

---

- Full: \$750
- Discounted: \$75

Cashier's checks, certified checks, and money orders should be made payable to Office of Elections.

## STATE SENATOR

Candidates for state senator who are unopposed in the General Election will be deemed elected after the Primary Election (Hawaii State Constitution, Article III, Section 4).

### SEATS AVAILABLE AND DISTRICTS

25 of 25, Senate 1 – 25

All 25 State Senate seats are up for election in 2022 due to redistricting by the 2021 Reapportionment Commission.

### TERM

2 years for 12 seats, November 2022 to November 2024

4 years for 13 seats, November 2022 to November 2026

State Senate seats have staggered 4-year terms of office, meaning half of the seats are up for election then the other half are up the following election. The Reapportionment Commission is responsible for assigning 2-year terms for 12 State Senate seats and 4-year terms to the other 13 seats. The 12 seats up for election in 2024 will resume the normal 4-year term going forward. The terms of office for State Senate will be available at [elections.hawaii.gov](https://elections.hawaii.gov) as the final reapportionment plan must be filed no later than February 27, 2022.

### QUALIFICATIONS

- Resident of Hawaii for not less than 3 years prior to election
- Qualified voter of the appropriate state senatorial district sought prior to filing

### SIGNATURE REQUIREMENT

15 registered voters of the senate district

### FILING FEE

- Full: \$250
- Discounted: \$25

Cashier's checks, certified checks, and money orders payable to Office of Elections.



## STATE REPRESENTATIVE

Candidates for state representative who are unopposed in the General Election will be deemed elected after the Primary Election (Hawaii State Constitution, Article III, Section 4).

### SEATS AVAILABLE AND DISTRICTS

---

51 of 51, Representative 1 – 51

### TERM

---

2 years, November 2022 to November 2024

### QUALIFICATIONS

---

- Resident of Hawaii for not less than 3 years prior to election
- Qualified voter of the appropriate state representative district prior to filing

### SIGNATURE REQUIREMENT

---

15 registered voters of the representative district

### FILING FEE

---

- Full: \$250
- Discounted: \$25

Cashier's checks, certified checks, and money orders payable to Office of Elections.



## OFFICE OF HAWAIIAN AFFAIRS (OHA) TRUSTEE

Candidates for Office of Hawaiian Affairs Trustee run in a nonpartisan special contest.

**Island Resident Trustee:** If there is 1 candidate for a seat, the candidate is deemed elected at the close of filing. If there are 2 candidates for a seat, they will appear on the General Election ballot and the candidate receiving the most votes is deemed elected. If there are 3 or more candidates for a seat, they appear on the Primary Election ballot. If a candidate receives a majority of the votes cast, excluding blank and overvotes, at the Primary Election, the candidate is deemed elected.

Otherwise, the 2 candidates receiving the most votes will appear on the General Election ballot.

The candidate who receives the most votes at the General Election is deemed elected.

**At-Large Trustee for 3 regularly scheduled seats on the ballot:** If there are 3 candidates, the candidates are deemed elected at the close of filing. If there are 4, 5, or 6 candidates, they appear on the General Election ballot and the 3 candidates receiving the most votes are deemed elected. If there are 7 or more candidates, they appear on the Primary Election ballot. If a candidate receives a majority of the votes cast, excluding blank and overvotes, the candidate is deemed elected. The next 4 candidates receiving the most votes will appear on the General Election ballot. Then, the 2 candidates who receive the most votes in the General Election are deemed

elected. If no candidate receives a majority of the votes cast, the 6 candidates receiving the most votes will appear on the General Election ballot.

The 3 candidates receiving the most votes in the General Election are deemed elected. (HRS §13D-4).

### SEATS AVAILABLE AND DISTRICTS

5 of 9, Maui resident, Oahu resident, At-Large (3 seats)

### TERM

4 years, November 2022 to November 2026

### QUALIFICATIONS

- Resident of respective island for seats requiring residency
- Registered voter of Hawaii

### SIGNATURE REQUIREMENT

25 registered voters of the State of Hawaii

### FILING FEE

- Full: \$250
- Discounted: \$25

Cashier's checks, certified checks, and money orders payable to the Office of Elections.





## OTHER AGENCY REQUIREMENTS

### CAMPAIGN SPENDING COMMISSION

Candidates and their committee(s) must register and file reports with the Campaign Spending Commission. An individual is a candidate under the campaign spending law if the individual 1) files nomination papers for an office; 2) receives contributions, makes expenditures, or incurs financial obligations of more than \$100 to bring about the individual's nomination or election to office; 3) gives consent for any other person to receive contributions, make expenditures, or incur financial obligations to aid the individual's nomination or election to office; or 4) is certified to be a candidate by the chief election officer or county clerk. Contact the Campaign Spending Commission for information on registration, filing reports electronically, reporting deadlines, fundraising, contributions, loans, expenditures, advertisements, public funding, and fines.

#### **Campaign Spending Commission**

Leiopapa A Kamehameha Building  
235 S. Beretania Street, Room 300  
Honolulu, HI 96813  
(808) 586-0285  
[www.hawaii.gov/campaign](http://www.hawaii.gov/campaign)

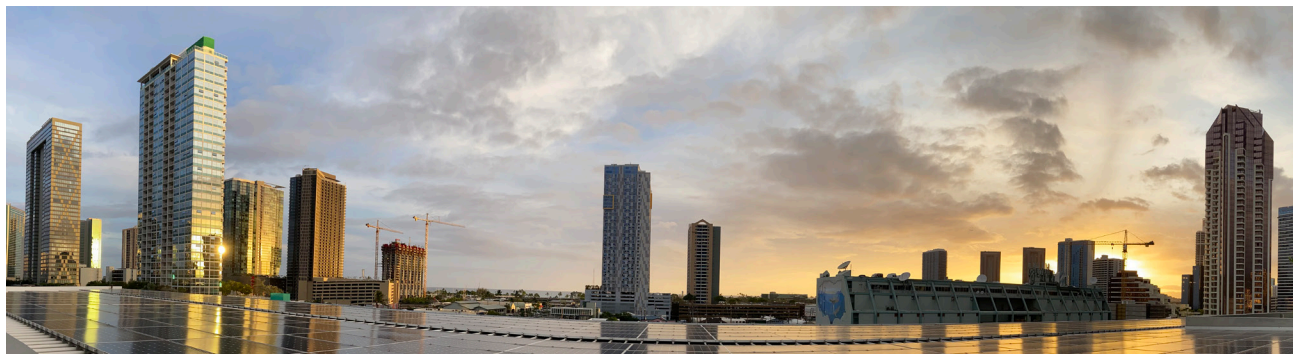


## STATE ETHICS COMMISSION

Candidates for state office, including Office of Hawaiian Affairs (OHA), are required by state law to file a disclosure of financial interests with the State Ethics Commission. Candidates for state office should be aware that there are ethics laws that apply to political campaign activities of state legislators, employees, and board and commission members. Copies of the Commission's flyer, Campaign Restrictions for State Officials and State Employees, and required forms are available from the State Ethics Commission. To avoid inadvertent violations of the State ethics laws, refer to Chapter 84 of the Hawaii Revised Statutes or contact the State Ethics Commission for information and guidance.

### **Hawaii State Ethics Commission**

1001 Bishop Street, Suite 970  
Honolulu, HI 96813  
(808) 587-0460  
[ethics@hawaiiethics.org](mailto:ethics@hawaiiethics.org)  
[www.ethics.hawaii.gov](http://www.ethics.hawaii.gov)



# COUNTY OF HAWAII OFFICE

## COUNCILMEMBER

A candidate who receives a majority of the votes cast, excluding blank and overvotes, or is unopposed for a seat at the Primary Election, is deemed elected and the contest will not appear on the General Election ballot. If no candidate receives a majority of the votes cast for a seat at the Primary Election, the 2 candidates receiving the most votes will appear on the General Election ballot. The candidate who receives the most votes at the General Election is deemed elected (Hawaii County Charter, Article XIII, Section 13-27).

### SIGNATURE REQUIREMENT

---

15 registered voters of the council district

### FILING FEE

---

- Full: \$250
- Discounted: \$25

Cashier's checks, certified checks, and money orders payable to Director of Finance.

### SEATS AVAILABLE AND DISTRICTS

---

9 of 9, nonpartisan, Council 1 – 9

### TERM

---

2 years, December 2022 to December 2024

### QUALIFICATIONS

---

- Resident and registered voter of the council district for at least 90 days prior to the Primary Election
- Qualified voter of the County of Hawaii for at least 1 year prior to election



## OTHER AGENCY REQUIREMENTS

### CAMPAIGN SPENDING COMMISSION

Candidates and their committee(s) must register and file reports with the Campaign Spending Commission. An individual is a candidate under the campaign spending law if the individual 1) files nomination papers for an office; 2) receives contributions, makes expenditures, or incurs financial obligations of more than \$100 to bring about the individual's nomination or election to office; 3) gives consent for any other person to receive contributions, make expenditures, or incur financial obligations to aid the individual's nomination or election to office; or 4) is certified to be a candidate by the chief election officer or county clerk. Contact the Campaign Spending Commission for information on registration, filing reports electronically, reporting deadlines, fundraising, contributions, loans, expenditures, advertisements, public funding, and fines.

#### **Campaign Spending Commission**

Leiopapa A Kamehameha Building  
235 S. Beretania Street, Room 300  
Honolulu, HI 96813  
(808) 586-0285  
[www.hawaii.gov/campaign](http://www.hawaii.gov/campaign)

### COUNTY OF HAWAII ETHICS

Hawaii County Code, Chapter 2, Article 15, Section 2-91.1, requires that all elected officials and candidates for county office must file financial disclosure statements with the County Elections Division. Candidates for elective county office, including incumbents, shall file statements within 10 working days after the deadline for filing for office. Additionally, elected officials must file disclosure statements within 20 working days after taking the oath of office and on/or before January 31 of each year thereafter until the end of the term of office.

#### **Office of the County Clerk**

25 Aupuni Street, Room 1502  
Hilo, HI 96720  
(808) 961-8277  
[hiloelec@hawaiicounty.gov](mailto:hiloelec@hawaiicounty.gov)  
[www.hawaiicounty.gov/our-county/legislative/office-of-the-county-clerk/elections-information](http://www.hawaiicounty.gov/our-county/legislative/office-of-the-county-clerk/elections-information)

# COUNTY OF MAUI OFFICE

## MAYOR

If there are 1 or 2 candidates for a seat, they will appear only on the General Election ballot. If there are 3 or more candidates for a seat, they will appear on the Primary Election ballot and the 2 candidates receiving the most votes will appear on the General Election ballot. The candidate who receives the most votes at the General Election is deemed elected (Maui County Charter, Article 7, Section 7-2).

### SEATS AVAILABLE AND DISTRICTS

---

1 of 1, nonpartisan, County of Maui

### TERM

---

4 years, January 2023 to January 2027

### QUALIFICATIONS

---

- Resident of the County of Maui for a period of at least 1 year prior to filing
- Qualified voter of the County of Maui

### SIGNATURE REQUIREMENT

---

15 registered voters of the County of Maui

### FILING FEE

---

- Full: \$500
- Discounted: \$50

Cashier's checks, certified checks, and money orders payable to County of Maui.



## COUNCILMEMBER

If there are 1 or 2 candidates for a seat, they will appear only on the General Election ballot. If there are 3 or more candidates for a seat, they will appear on the Primary Election ballot and the 2 candidates receiving the most votes will appear on the General Election ballot. The candidate who receives the most votes at the General Election is deemed elected (Maui County Charter, Article 3, Section 3-2).

### SEATS AVAILABLE AND DISTRICTS

---

9 of 9, nonpartisan, East Maui, West Maui, Wailuku-Waihee-Waikapu, Kahului, South Maui, Makawao-Haiku-Paia, Upcountry, Lanai, Molokai

## TERM

2 years, January 2023 to January 2025

## QUALIFICATIONS

- Resident in the area of the county from which the person seeks to be elected for a period of 1 year before filing
- Qualified voter of the County of Maui

## SIGNATURE REQUIREMENT

15 registered voters of the County of Maui

## FILING FEE

- Full: \$250
- Discounted: \$25

Cashier's checks, certified checks, and money orders payable to County of Maui.

## OTHER AGENCY REQUIREMENTS

### CAMPAIGN SPENDING COMMISSION

Candidates and their committee(s) must register and file reports with the Campaign Spending Commission. An individual is a candidate under the campaign spending law if the individual 1) files nomination papers for an office; 2) receives contributions, makes expenditures, or incurs

financial obligations of more than \$100 to bring about the individual's nomination or election to office; 3) gives consent for any other person to receive contributions, make expenditures, or incur financial obligations to aid the individual's nomination or election to office; or 4) is certified to be a candidate by the chief election officer or county clerk. Contact the Campaign Spending Commission for information on registration, filing reports electronically, reporting deadlines, fundraising, contributions, loans, expenditures, advertisements, public funding, and fines.

### Campaign Spending Commission

Leiopapa A Kamehameha Building  
235 S. Beretania Street, Room 300  
Honolulu, HI 96813  
(808) 586-0285  
[www.hawaii.gov/campaign](http://www.hawaii.gov/campaign)

### COUNTY OF MAUI ETHICS

Section 10-3 of the Maui County Charter requires that all candidates for elective county office file a financial disclosure statement concurrently with the filing of nomination papers at the County Elections Division and Board of Ethics. Additionally, all elected county officers shall file a financial disclosure statement within 15 days of taking office.

### Office of the County Clerk

200 South High Street  
Wailuku, HI 96793  
(808) 270-7749  
[county.clerk@mauicounty.us](mailto:county.clerk@mauicounty.us)  
[www.mauicounty.gov/elections](http://www.mauicounty.gov/elections)

# COUNTY OF KAUAI OFFICE

## MAYOR

If there is only 1 candidate at the Primary Election, the candidate is deemed elected at that time. If there are 2 or more candidates at the Primary Election, the 2 candidates receiving the most votes will appear on the General Election ballot. The candidate who receives the most votes at the General Election is deemed elected (Kauai County Charter, Article I, Section 1.03).

### SEATS AVAILABLE AND DISTRICTS

---

1 of 1, nonpartisan, County of Kauai

### TERM

---

4 years, December 2022 to December 2026

### QUALIFICATIONS

---

- Resident of the County of Kauai for at least 3 years prior to election
- Qualified voter of the County of Kauai
- 30 years of age

### SIGNATURE REQUIREMENT

---

15 registered voters of the County of Kauai

### FILING FEE

---

- Full: \$500
- Discounted: \$50

Cashier's checks, certified checks, and money orders payable to Director of Finance.

## COUNCILMEMBER

The 14 candidates receiving the most votes at the Primary Election will appear on the General Election ballot. The 7 candidates receiving the most votes at the General Election will be deemed elected (Kauai County Charter, Article I, Section 1.03).

### SEATS AVAILABLE AND DISTRICTS

---

7 of 7, nonpartisan, County of Kauai

### TERM

---

2 years, December 2022 to December 2024

### QUALIFICATIONS

---

Qualified voter of the County of Kauai for at least 2 years prior to election



## SIGNATURE REQUIREMENT

---

15 registered voters of the County of Kauai

## FILING FEE

---

- Full: \$250
- Discounted: \$25

Cashier's checks, certified checks, and money orders payable to Director of Finance.



## OTHER AGENCY REQUIREMENTS

### CAMPAIGN SPENDING COMMISSION

Candidates and their committee(s) must register and file reports with the Campaign Spending Commission. An individual is a candidate under the campaign spending law if the individual 1) files nomination papers for an office; 2) receives contributions, makes expenditures, or incurs financial obligations of more than \$100 to bring about the individual's nomination or election to

office; 3) gives consent for any other person to receive contributions, make expenditures, or incur financial obligations to aid the individual's nomination or election to office; or 4) is certified to be a candidate by the chief election officer or county clerk. Contact the Campaign Spending Commission for information on registration, filing reports electronically, reporting deadlines, fundraising, contributions, loans, expenditures, advertisements, public funding, and fines.

### Campaign Spending Commission

Leiopapa A Kamehameha Building  
235 S. Beretania Street, Room 300  
Honolulu, HI 96813  
(808) 586-0285  
[www.hawaii.gov/campaign](http://www.hawaii.gov/campaign)

### COUNTY OF KAUAI ETHICS

Section 3-1.9 of the Kauai County Code requires that candidates for elective county office shall, within 7 days of filing a nomination paper, file with the County of Kauai Board of Ethics a financial disclosure statement. Upon assuming office, newly elected officials shall file an amended financial disclosure statement within 30 days of assuming office.

### Board of Ethics

4444 Rice Street, Suite 300  
Lihue, HI 96766  
(808) 241-4917  
[www.kauai.gov/government/boards-and-commissions/board-of-ethics](http://www.kauai.gov/government/boards-and-commissions/board-of-ethics)

# CITY AND COUNTY OF HONOLULU OFFICE

## COUNCILMEMBER

If there is only 1 candidate for a seat, the candidate will appear on the Primary Election ballot, and be deemed elected at that time. If there are 2 candidates for a seat, they will only appear on the General Election ballot. If there are 3 or more candidates for a seat, they will appear on the Primary Election ballot. If a candidate receives a majority of the votes cast, excluding blank and overvotes, at the Primary Election, the candidate is deemed elected. Otherwise, the 2 candidates receiving the most votes will appear on the General Election ballot. The candidate who receives the most votes at the General Election is deemed elected (City and County of Honolulu Charter, Article XIII, Section 13-116).

### SEATS AVAILABLE AND DISTRICTS

---

4 of 9, nonpartisan, Council II, IV, VI, VIII

### TERM

---

4 years, January 2023 to January 2027

### QUALIFICATIONS

---

Resident and registered voter of the appropriate council district

### SIGNATURE REQUIREMENT

---

15 registered voters of the council district

### FILING FEE

---

- Full: \$250
- Discounted: \$25

Cashier's checks, certified checks, and money orders payable to City and County of Honolulu.





## OTHER AGENCY REQUIREMENTS

### CAMPAIGN SPENDING COMMISSION

Candidates and their committee(s) must register and file reports with the Campaign Spending Commission. An individual is a candidate under the campaign spending law if the individual 1) files nomination papers for an office; 2) receives contributions, makes expenditures, or incurs financial obligations of more than \$100 to bring about the individual's nomination or election to office; 3) gives consent for any other person to receive contributions, make expenditures, or incur financial obligations to aid the individual's nomination or election to office; or 4) is certified to be a candidate by the chief election officer or county clerk. Contact the Campaign Spending Commission for information on registration, filing reports electronically, reporting deadlines, fundraising, contributions, loans, expenditures, advertisements, public funding, and fines.

#### **Campaign Spending Commission**

Leiopapa A Kamehameha Building  
235 S. Beretania Street, Room 300  
Honolulu, HI 96813  
(808) 586-0285  
[www.hawaii.gov/campaign](http://www.hawaii.gov/campaign)

### CITY AND COUNTY OF HONOLULU ETHICS

Section 3-8.4 of the Revised Ordinances of Honolulu requires that candidates for City and County of Honolulu elective offices, including incumbents, file financial disclosure statements with the Clerk's Office within 10 working days after the deadline for filing for office. Additionally, elected officials must file financial disclosure statements within 20 working days after taking the oath of office on or before January 31 of each year thereafter until the end of the term of office.

#### **Office of the City Clerk**

530 South King Street, Room 100  
Honolulu, HI 96813  
(808) 768-3800  
[clerks@honolulu.gov](mailto:clerks@honolulu.gov)  
[www.honoluluelections.us](http://www.honoluluelections.us)



# CAMPAIGNING

## ADVERTISING

The Office of Elections does not monitor, regulate, or enforce campaigning and advertising. For more information contact the Campaign Spending Commission. In addition, all candidates are urged to check their respective county ordinances regulating advertisements.

### **Campaign Spending Commission**

Leiopapa A Kamehameha Building  
235 S. Beretania Street, Room 300  
Honolulu, HI 96813  
(808) 586-0285  
[www.hawaii.gov/campaign](http://www.hawaii.gov/campaign)



Any advertisement, including signs and banners, that is broadcast, televised, circulated, published, distributed, or otherwise communicated, including by electronic means, shall contain the name and address of the candidate, candidate committee, or other person paying for the advertisement.

If the advertisement is not authorized by a candidate or a candidate's committee, the advertisement shall contain the name and address of the person paying for the advertisement (HRS §11-391).

In addition to this requirement, no candidate or committee shall cause or submit any advertisement in support of a candidate or against an opponent, except under the following conditions:

- As authorized by the candidate: the advertisements must contain a prominent notice that the advertisement is approved and authorized by the candidate, except that advertisements paid for by the candidate or candidate committee does not need to include the notice of approval and authority.
- Advertisements not authorized by the candidate: the advertisements must contain a prominent notice that the advertisement is published, broadcasted, televised, or circulated without the approval and authority of the candidate (HRS §11-391).

Bumper stickers and other sundry items are exempt from the disclaimer requirement (HRS §11-302 & HAR §3-160-2).

For advertisements missing the disclaimer, the Campaign Spending Commission has adopted a Schedule of Fines which is available for viewing on the Commission's website at [ags.hawaii.gov/campaign/legal-resources/schedule-of-fines/](https://ags.hawaii.gov/campaign/legal-resources/schedule-of-fines/).

# CAMPAIGN SIGNS REGULATIONS

As reference, the following are excerpts from state law and county ordinances related to campaign sign regulations.

## STATE OF HAWAII

No person or government agency, whether federal, state, or county, shall, in any manner or for any purpose do any of the following acts without a written permit from the director of transportation or the director's authorized representative: [p]lace, erect, leave, or store any structure, motor or other vehicle, equipment, or any other object wholly or partially within the right-of-way of any state highway; provided that this paragraph shall not apply to the holding or displaying of movable signs, for the purpose of carrying on political campaign activities (HRS §264-6).



No person shall erect or maintain any outdoor advertising outside the right of way boundary and visible from the main-traveled way of any federal-aid or state highway within the State, except for the following:

- Directional and other official signs and notices;
- Signs, displays, and devices advertising the sale or lease of the property upon which they are located;
- Signs, displays, and devices advertising activities conducted on the property upon which they are located; and
- Signs lawfully in existence on October 22, 1965 that have been determined as landmark signs (HRS §264-72).

## COUNTY OF HAWAII

Hawaii County Code, Chapter 3, Section 3-3, Definitions:

(28) “Sign” means any device, figure, painting, picture, drawing, placard, poster, awning, canopy, street clock, light, model, notice or bill, including any announcement, declaration, display, illustration, insignia, or message which is: (A) Used to advertise or promote the interests of any person or entity or to communicate information of any kind to the public; (B) Placed on or applied to real property outdoors, attached to the exterior of buildings or structures or is located or displayed directly on the exterior or interior surface of a window; and (C) Visible from any public street, park, other public place or pedestrian way. A sign also includes, but is not limited to, any and all pictorial representations, letters, numerals, emblems, flags, banners, pennants, inscriptions, or patterns whether affixed to a building, painted, or otherwise depicted on a building, or placed separate from any building; provided that traffic control devices prescribed by chapter 291C, Hawaii Revised Statutes, shall not be construed as signs under this chapter. “Signs” as used in this chapter is not meant to include or prohibit street addresses required by chapter 14, sculpted ornamental shrubbery or ground cover, or signage that is constitutionally protected or otherwise permitted by state or federal law.

Additionally, please note that Act 194, signed into law on June 18, 2003 amended Hawaii Revised Statutes §445-112(1) to remove any durational limits on the posting of political signs. As such, any durational limits on the posting of political campaign signs in the County Code are no longer applicable. Conformance with all other sign requirements addressed by the building and traffic provisions of the County Code will still be required.

For complete information on sign regulations for the County of Hawaii, please refer to the Hawaii County Code, Chapter 3 Signs and direct any questions to the Department of Public Works.



### **Department of Public Works**

Aupuni Center

101 Pauahi Street, Suite 7

Hilo, HI 96720

(808) 961-8321

[www.dpw.hawaiicounty.gov/home-publicworks](http://www.dpw.hawaiicounty.gov/home-publicworks)



## COUNTY OF MAUI

Maui County Code, Chapter 16.12A, Noncommercial Signs, Section 16.12A.030, Signs authorized for all districts without a permit: For all districts, signs or posters not exceeding eighteen square feet in display surface, announcing candidates seeking political office are authorized.

## COUNTY OF KAUAI

Section 15-4.6 Signs Not Requiring a Permit. The following types of signs are exempt from the permit requirements of this Article, but must comply with the requirements of sections 15-4.4 (Prohibited Signs), 15-4.7 (Construction and Location of Signs), and 15-4.10 (Violation and Penalty).

(a) Temporary Signs.

(2) Political Campaign Sign. Any sign which:

(A) Identifies the headquarters of a political candidate, and shall not exceed the size limitation set forth in Section 15-4.5(b).

(B) Identifies and/or provides information about a political candidate or issue to be voted upon. It shall not be posted within the street right-of-way boundary of any public road or highway and shall not block, obstruct or impede, partially or completely, any public sidewalk or pedestrian walkway and shall not exceed the size limitations set forth in Section 15-4.5(b).

For complete information on campaign sign regulations for the County of Kauai, see Article 4, Section 15 (Outdoor Signs) of the Kauai County Code and direct any questions to Department of Public Works, Building Division.



### Department of Public Works, Building Division

4444 Rice Street, Suite 175

Lihue, HI 96766

(808) 241-4854

[www.kauai.gov/publicworks/building](http://www.kauai.gov/publicworks/building)



## CITY AND COUNTY OF HONOLULU

Political campaign signs fixed to the ground or to a structure were prohibited under Section 21-3.90-2(d) of the Land Use Ordinance (LUO). This prohibition, however, was found unconstitutional by the courts and was repealed by the Council. Therefore, no regulation exists at present.

Signs identifying the campaign headquarters of a political candidate or issue are permitted, and are regulated as “business signs.” Such signs must be located on the premise of the headquarters, and are subject to the LUO sign regulations regarding number, type, and size for the underlying zoning district (see Section 21-3.90-3).

Signs associated with campaign headquarters which are located in the following places are regulated:

- On the lot outside the campaign office; or
- On the exterior face of the building where the campaign headquarters is located; or directly fixed to a window (inside or outside) of the campaign office when they can be seen from a public right-of-way or the parking lot of an adjoining lot.





Before installing a headquarters sign, it is necessary to obtain a sign permit issued by the Planning and Permitting Department located in the Honolulu Municipal Building. Detailed information on such signs and interpretation or clarification of the rules may be obtained over the business counter or by calling the Planning and Permitting Department, Permit Issuance Section, at 768-8000.

The LUO does not regulate advertisements fixed to a motor vehicle and political signs carried by individuals.

No person shall use any type of aircraft or other self-propelled or buoyant airborne object to display in any manner or for any purpose whatsoever any sign or advertising device. For the purpose of this section, a “sign or advertising device” includes, but is not limited to, a poster, banner, writing, picture, painting, light, model, display, emblem, notice, illustrations, insignia, symbol, or any other form of advertising sign or device.