

1. MARK

Read instructions on each ballot card

Use a black or blue pen. Completely fill in the box.

YES!	<input type="checkbox"/>
NO	<input checked="" type="checkbox"/>
NO	<input checked="" type="checkbox"/>

If you do not want to vote on a contest, leave it blank.

View 2016 Charter Amendments brochure [here](#).

Requesting a replacement ballot

If you misplace or make a mistake on your ballot, call your Clerk's Office to obtain a replacement ballot.

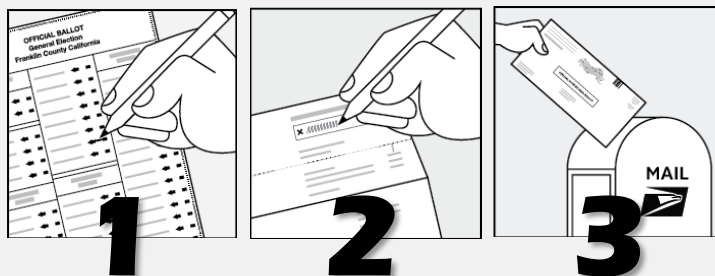
County of Hawaii	(808) 961-8277
County of Maui	(808) 270-7749
County of Kauai	(808) 241-4800
C&C of Honolulu	(808) 768-3800

[VOLUNTEER](#)
[ON ELECTION DAY!](#)

2. PREP

Prepare your ballot

1. Place the voted ballot into the yellow secrecy envelope and seal the envelope.
2. Place the yellow secrecy envelope into the Ballot Return Envelope. If you received instructions to provide a copy of identification with your voted ballot, enclose copies of identification. Seal the envelope.
3. SIGN the affirmation statement on the Ballot Return Envelope.
4. Your ballot will NOT be counted if the affirmation statement is not signed.



ABSENTEE BALLOT GUIDE
2016 GENERAL ELECTION

3. RETURN

By mail

No postage is required.

To be counted, your ballot must be received by Election Day, Tuesday, November 8 at 6:00 PM.

In-person

Bring your ballot and return envelope.

PRIOR TO ELECTION DAY

County Clerk Offices

- Mon-Fri 7:45 AM - 4:30 PM
- View locations [here](#)

Office of Election

- Mon-Fri 7:45 AM - 4:30 PM
- View directions [here](#)

ON ELECTION DAY

Any polling place within your county.

[VOLUNTEER](#)
[ON ELECTION DAY!](#)