

E mālama i kou 'alemanaka.



2024 Koho Wae Moho

Iul 23 | Pū'olo Pāloka Leka

E maka'ala i kou pū'olo pāloka Koho Wae Moho leka i kou pahu leka.

Iul 29 | Hale Lawelawe Koho Pāloka

Hāmama nā Hale Lawelawe Koho Pāloka a hiki i ka Lā Koho, no ke kāinoa 'ana e koho a me ka po'e koho kīnānā. E kele aku i elections.hawaii.gov no nā kahua a me nā hola o ia mau wahi.

Iul 31 | Kāinoa Mea Koho

'O kēia ka lā hope loa e kāinoa ai nā mea koho makamua ma o ka Palapala Kāinoa Koho no ke Koho Wae Moho

'Auk 10 | Koho Wae Moho

Pono e loa'a nā pāloka ma ka hola 7 o ke ahiahi, a ma mua mai paha.

2024 Koho Lauā

'Oka 18 | Pū'olo Pāloka Leka

E maka'ala i kou pū'olo pāloka Koho Lauā leka i kou pahu leka.

'Oka 22 | Hale Lawelawe Koho Pāloka

Hāmama nā Hale Lawelawe Koho Pāloka a hiki i ka Lā Koho, no ke kāinoa 'ana no ke koho a me ka po'e koho kīnānā. E kele aku i elections.hawaii.gov no nā kahua a me nā hola o ia mau wahi.

'Oka 28 | Kāinoa Mea Koho

'O kēia kā lā hope loa e kāinoa ai nā mea koho makamua ma o ka Palapala Kāinoa Koho no ke Koho Lauā.

Now 5 | Koho Lauā

Pono e loa'a nā pāloka ma ka hola 7 o ke ahiahi, a ma mua mai paha.

Makemake anei e koho ma kahi 'ē?

Inā 'auana ana 'oe mai kou home aku i ka wā koho, hiki nō ke noi i ka ho'ouana 'ia 'ana o kou pāloka i kekahi helu wahi 'oko'a. E ho'opihapiha i kekahi Palapala Noi Koho Kahi 'Ē a ho'ouana 'ia i ka Mahele Koho o kou kalana he 7 mau lā ma mua o ka lā koho. E kele aku iā elections.hawaii.gov. no ka palapala.

E aho paha ka hele kino 'ana e koho?

Hiki nō ke hele kino a koho i nā Hale Lawelawe Koho Pāloka, ua hiki pu ke kāinoa no ke koho, a koho kīnānā ho'i. Ua hāmama ia Hale no 10 mau lā ma mua o ka Lā Koho. I mea e maopopo ai nā kahua a me nā hola, e kele aku iā elections.hawaii.gov.

E Ho'oka'a 'Ike Mai

No ke 'ikepili hou aku e pili ana i ke koho 'ana, e ho'oka'a 'ike i kou Mahele Koho Kālana 'o ia ho'i

Kalana o Hawai'i	(808) 961-8277
Kalana o Maui	(808) 270-7749
Kalana o Kaua'i	(808) 241-4800
Kalana & Kūlanakauhale o Honolulu	(808) 768-3800

No ka 'ikepili koho hou aku, e ho'oka'a 'ike i ke Ke'ena o Ke Koho 'Ana

Kelepona:	(800) 453-8683
Kelepona Kākī 'Ole:	1-800-442-8683
Kelepona TTY (Kikokiko):	(808) 453-6150
Kelepona TTY (Kikokiko) Kākī 'Ole:	1-800-345-5915
Leka Uila:	elections@hawaii.gov
Pūnaewele:	elections.hawaii.gov



E koho pāloka ma kahi 'olu'olu.





He 3 mau hana i mea e koho ma'alahi ai.

1. E Kāinoa E Koho Pālōka

E kele aku i elections.hawaii.gov i mea e kāinoa uila ai a i 'ole e a'o e pili ana i nā koho 'ē a'e o ke kāinoa 'ana. Inā ua ne'e paha 'oe, a i 'ole ua loli paha kou inoa a helu wahī, 'a'ole e hala, e ho'oponopono i kou mau 'ikepili iho i mea e loa'a mau mai ai kou pālōka.

2. E Hiki Leka Mai Kou Pālōka

Ke kāinoa 'ia, e loa'a mai ana iā 'oe he pū'olo pālōka he 18 mau lā ma ka lohi loa ma mua ho'i o ka wā e koho ai. Inā 'a'ole hiki aku, e ho'oka'a 'ike koke i ka Mahele Koho o kou Kalana.

Ma mua o ke koho 'ana, e nānā i ka palapala alaka'i koho uila i mea e na'ana aku ai i nā 'olelo a nā moho a me nā 'olelo e pili ana i nā nīnau ma luna o ka pālōka. E kele aku iā elections.hawaii.gov.

3. E koho 'olu'olu

E maka'ala i ka ho'opihapiha 'ana me ka no'ono'o no nā 'olelo kuhikuhi ma luna o kou pālōka, a laila e pūlima a e ho'ihoi i ka wahī e like me ia 'olelo. 'Elua mau ala o ka ho'ihoi 'ana, 'o ka ho'ouna leka me ka wahī i uku 'ē 'ia a i 'ole, 'o ka pahu mālama pālōka ho'i i loko o kou kalana.

Pono ka pālōka kūikawā?

Inā he kīnānā hua leka a 'a'ole hiki ke heluhelu i ka hua leka ma'amau, ua hiki ke noi 'ia he pālōka uila kūikawā ma o ka ho'opihapiha 'ana i ka Palapala Kāinoa Koho pepa a i 'ole ma o ka 'ōnaehana kāinoa koho ma elections.hawaii.gov



No ka ho'opihapiha 'ana i kou pālōka leka

1. Ma mua o ke koho 'ana,

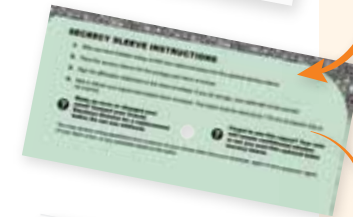
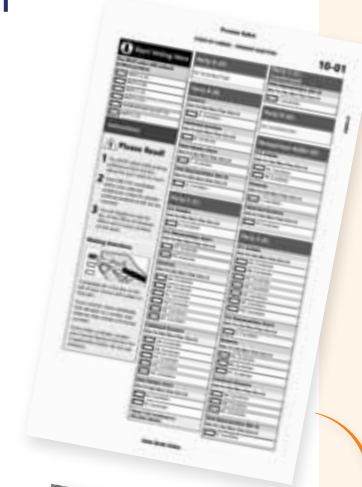
e na'ana i nā 'ao'ao 'elua o ka pālōka. I mea e koho ai, e ho'ouliuli i ka pahu o kou koho me ka 'īnika 'ele'ele a uliuli paha. Inā hemahema kāu hana, e ho'oka'a 'ike aku i ka Mahele Koho o kou Kalana i mea e loa'a ai he pālōka hou.

2. Ma hope o ke koho 'ana,

e ho'okomo i kou pālōka i ka wahī huna. A laila, e ho'okomo i ka wahī huna i ka wahī ho'ihoi.

3. E heluhelu i ka 'ōlelo hō'oiā a e pūlima i ka wahī ho'ihoi.

He koina ka pūlima 'ana i mea e helu 'ia ai kou pālōka. Ma hope o ka hō'oiā 'ana i kāu pūlima e helu 'ia ai kou pālōka.



No ka ho'ouna 'ana i kou pālōka i ho'opihapiha 'ia

Ma o ka leka: E ho'okomo i kou pālōka i ho'opihapiha 'ia me ka wahī i uku 'ē 'ia. E maka'ala i nā wā halihali o ka 'Oihana Leka o 'Amelika ('o ia ho'i ka USPS) i mea e pae aku ai ka pālōka i ka wā kūpono.

Ma o Ka Pahu Pālōka: E ho'okomo i kou pālōka i ho'opihapiha 'ia i ka Pahu pālōka i kou kalana. E huli i ke kahua kūpono a me nā hola ma elections.hawaii.gov.

PONO E PAE AKU KOU PĀLOKA I HO'OPIHAPIHA 'IA I KOU MAHELE KOHO KALANA MA KA HOLA 7 O KE AHIAHI MA KA LĀ KOHO I MEA E HELU 'IA AI.

E hahai i kāu pālōka.

Hiki ke maka'ala aku i kahi o kāu pālōka i mea e hō'oiā ai i ka pae pono 'ana aku me ka Mahele Koho o kou Kalana ma elections.hawaii.gov